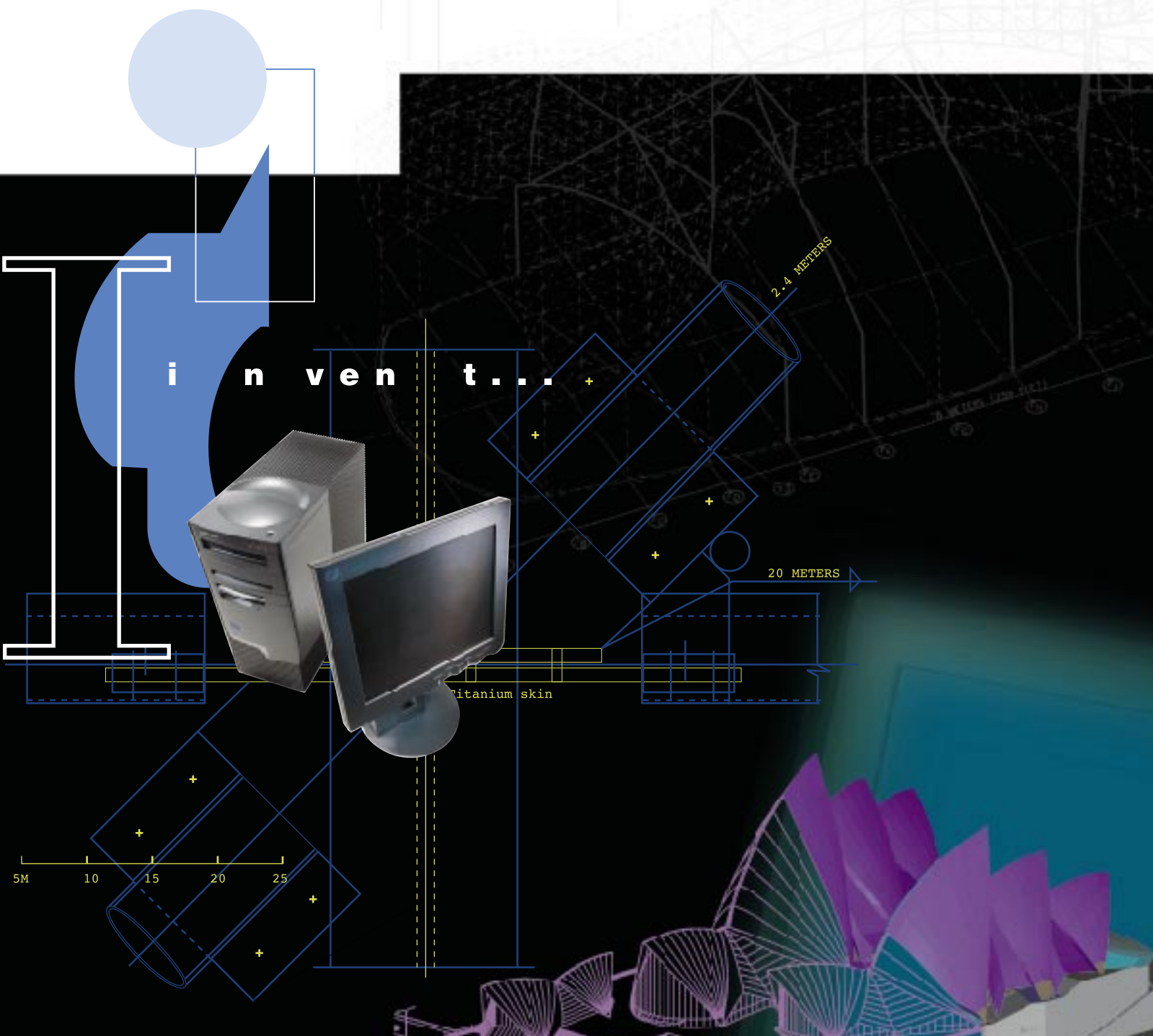


IntelliStation





IntelliStation

Achieve more—better and faster— with the IBM IntelliStation

Building the future? The tool you need is here today, ready to meet your daily challenge: to produce more, in less time, with higher quality. A potent tool that sparks invention, forges new connections, reveals new insights. The IBM IntelliStation combines the most advanced Intel® Pentium® II processors with Microsoft® Windows® NT 4.0, the new standard for 32-bit computing. Result? Technical workstation performance and the ultimate in desktop productivity and manageability. Fueled to run your hungry engineering applications as well as your everyday business suite, the IBM IntelliStation's multitasking desktop is the center of your expanding universe. Collaborate across workgroups or across continents—the IntelliStation expedites your work from inspiration to Internet connection. Ready to plug-and-go with your current network and interoperable with UNIX environments for the ultimate in cross-platform convenience.

Microsoft
Windows NT

Application-focused performance

Single- or dual-processors, 2D or 3D graphics, IBM has the precision tool to meet your needs. The IBM IntelliStation is the choice for marathon work schedules, built with future growth in mind. Blaze through finite-element computations with dual Pentium II processors at up to 400MHz¹. Or start with the uni-processor model and double your compute power as needed—simply plug in a second Pentium II module for symmetric multi-processing and get a real performance kick from multithreaded code. Intel's MMX™ technology enhances your image with smooth motion and pristine sound without requiring additional hardware. With 100MHz SDRAM expandable up to 1GB, available 10,000rpm hard drives, dual-channel Ultra Wide SCSI enabled with RAIDport and 10/100 Ethernet to speed your models over the wire, the IntelliStation bristles with flexible firepower to spark your creativity.

Application-focused graphics

Complex design demands instantaneous screen response. The IBM IntelliStation delivers with a choice of dimensions. For brilliant 2D performance, the 64-bit Matrox Millennium II packs 8MB of dual-ported WRAM (upgradeable to 16MB) and a 250MHz RAMDAC to achieve industry-leading WinMark scores. Combining high refresh rates with expansive resolutions up to 1920x1200, this graphics card is the industry reference. For demanding 2D display and a wide range of 3D projects, the PERMEDIA 2 enhanced card taps into a dedicated AGP slot for increased bandwidth and speed. Features such as OpenGL support, 100MHz SGRAM and 16-bit Z-buffering further enhance the GLINT-based power of the PERMEDIA 2 enhanced.

For the exacting 3D challenges of modeling, the Intense 3D Pro 3400 by Intergraph displays electrifying performance. Stacked with 16MB of video SDRAM and 16MB of texture SGRAM, you'll get the detailed view with true-color 1280x1024 resolution, 24- or 32-bit Z-buffering for precision object ordering,

"It's the fastest NT workstation I've seen. Most systems can rotate a shaded image but the IntelliStation flies when integrating data, running toolpaths, and manipulating files. And it's easy to install—we just plugged it in, loaded the software, and it was ready to run."

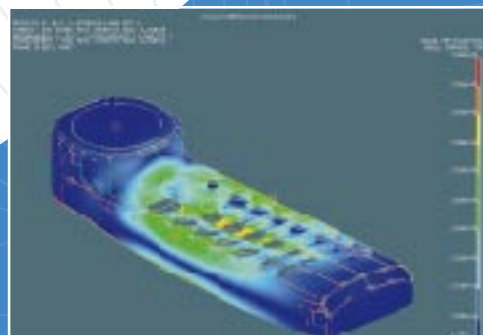
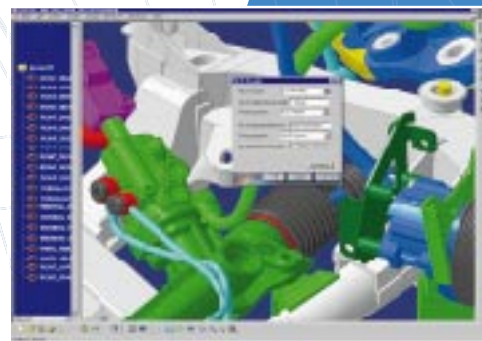
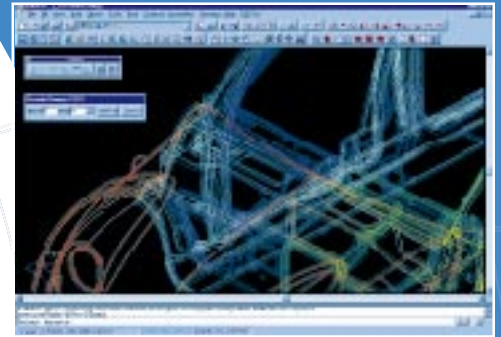
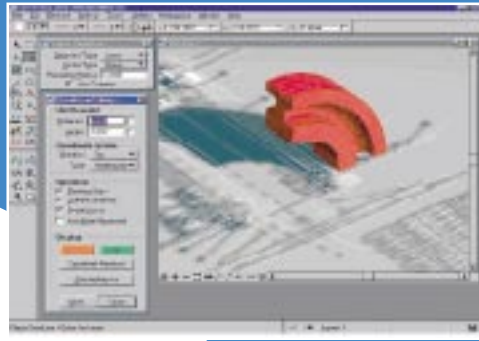
Mike Britt, Cadmold, Inc.



Gouraud shading, trilinear texture mapping and support for both OpenGL and Heidi. The available Intergraph geometry and light accelerator—supercharged with 14 digital signal processors (DSPs)—makes the IntelliStation the ultimate 3D environment on Windows NT. The IBM IntelliStation's real-time graphics eliminate the wait and let you create.

Application certification

The criteria for your next workstation can be nothing less than potent performance, faultless reliability and worry-free application compatibility—the very standards the IBM IntelliStation meets through certification by leading engineering vendors. Their rigorous testing confirms the IBM IntelliStation's performance and compatibility, giving you the assurance of expert, coordinated support encompassing both hardware and software issues. For the real-world demands you face every day, IBM has the experience, resources and technology partnerships to merit your complete confidence. For the current list of supported applications, visit our Web site at www.ibm.com/pc/us/intellistation



The IntelliStation advantage

IBM is committed to helping you deploy, manage and protect your workstation investment. For example, IBM's Asset ID² technology can identify and track the movement of IntelliStations "branded" with radio frequency ID tags to streamline deployment, inventory and security measures. Monitor hard drive performance with IBM's SMART Reaction™ proactive failure tools featuring customized client/manager alerts and automatic backup to ensure the safety of your valuable data. IBM introduced standards-based remote system management to the industry with Wake on LAN (WOL), enabling IS managers to power on systems over the network to perform off-hours tasks such as configuration and software updates. WOL is now supplemented by Alert on LAN technology that monitors and reports on temperature, voltage, chassis intrusion, component removal, disconnection to power or the LAN—even when the computer is powered off! Alert on LAN works as a stand-alone application or in conjunction with IBM's Netfinity

Manager and Intel's LANDesk Client Manager—both software clients³ are included with IntelliStation—providing unprecedented control over your domain.

Relief for your IT headaches

IBM SystemXtra is designed to make the most of your IT investment by combining a host of technologies, services, and flexible financing to make your job easier. These services include training, on-site recovery assistance and network maintenance. Combined with IBM's Technology Exchange—a flexible and affordable way to upgrade your leased computers after only two years—for a single monthly invoice.

Visit your IBM Business Partner

to view the fully rendered performance of the IBM IntelliStation. Or get a preview and the full list of supported CAD/CAM applications at our Web Site:
www.ibm.com/pc/us/intellistation



© International Business Machines Corporation 1998

Printed in the United States of America
4-98
All Rights Reserved

¹ MHz only measures microprocessor internal clock speed, not application performance. Many factors affect application performance.

² Asset ID allows your IntelliStation to be "scanned" by various radio frequency devices supplied by independent companies. Asset ID is intended for use only with radio frequency equipment that meets ANSI/IEEE C95.1 1992 RF Radio Frequency Limits.

³ Diskettes and hard copy documentation available at extra charge.

⁴ GB means billions of bytes when referring to hard drive capacity. Accessible capacity may vary.

Cover art and screen images courtesy of Autodesk, Inc., Bentley Systems, Inc., Dassault Systemes, SDRC and PTC.

IBM, IntelliStation, Netfinity Manager, SystemXtra, SMART Reaction, Asset ID, Alert on LAN and Wake on Lan are trademarks or registered trademarks of International Business Machines Corporation. Microsoft, Windows, Windows NT, and the Windows NT logo are trademarks or registered trademarks of Microsoft Corporation. Intel, Pentium II, MMX and LANDesk Client Manager are trademarks or registered trademarks of Intel Corporation. Other trademarks or registered trademarks are the properties of their respective companies.

IBM reserves the right to alter specifications and other product information without prior notice.

This publication was produced in the United States. IBM may not offer products, services or features discussed in this document in other countries and the information is subject to change without notice. Consult your local IBM representative for information on the products, services and features available in your area.

International Business Machines provides this publication "as is" without warranty of any kind, either expressed or implied, including but not limited to, the implied warranties of merchantability or fitness for a particular purpose. Some jurisdictions do not allow disclaimer of express or implied warranties in certain transactions, therefore, this statement may not apply to you.



Printed on recycled paper containing 10% recovered post-consumer fiber.



IBM IntelliStation M Pro Technical Specifications

Processor	350MHz or 400MHz Pentium II processor, dual capable, 512KB L2 cache
Memory std/max	64, 128 or 256MB/1GB
Type/speed/total sockets	SDRAM/ECC/100MHz/4 DIMMs
Hard drives⁴	Up to 9.1GB 10,000rpm Wide Ultra SCSI with SMART
Slots	6 slots: 4PCI, 1 shared PCI/ISA, 1 AGP (5 open slots)
Bays	6 bays: (2) 3.5" internal; (2) 3.5" external; (2) 5.25" external
Graphics engines	Matrox Millennium II, 8MB/16MB max PERMEDIA 2 enhanced with 8MB flexible allocation video RAM Intergraph Intense 3D Pro 3400 with 16MB memory Intergraph geometry and lighting accelerator available



G520-9420-03