

AST Enhanced Graphics Diagnostics Manual

AST
RESEARCH INC.

Diagnostics tests for AST
Enhanced Graphics Products,
to test resolution, color, and
text capabilities

AST Presents
Graphics
Freedom



The AST Gazette

Volume 2 Number 5 Irvine, California May 1, 1986

Sam Scott
Gazette Staff Writer

Twenty years from now, a large crowd will stare at the

the ill-fated... and Desktop Publishing

...and Desktop Publishing

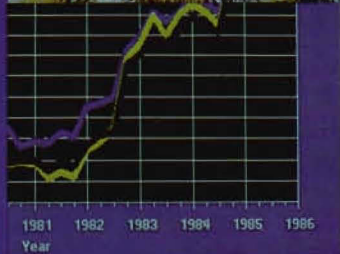
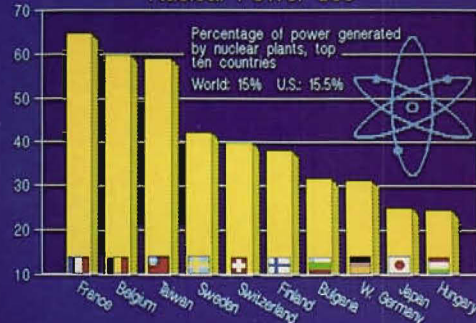
NEW PRODUCTS



AST Announces New PC LAN

When AST new product managers met a little over one month ago to discuss their new entry in the PC local area networking arena, they industry analysts viewed the results with skepticism. The new product code name "Network-Net" is designed to take advantage of the natural and computer resources abundant in virtually every office environment nationwide. Use AST systems simply stated "This is the way the market could corner. We could control the brain of every office worker

Nuclear Power Use



AST Enhanced Graphics Diagnostics

000369-001 A
June 1986

AST RESEARCH, INC.
Irvine, California
(714)863-1333

First Edition (June 1986)

IBM is a registered trademark of International Business Machines Corporation.

Hercules Graphics Card is a trademark of Hercules Computer Technology, Inc.

Changes are periodically made to the information contained in this manual; these changes will be incorporated into new editions.

In view of demonstrated product reliability and comprehensive warranty policies, AST Research, Inc. does not normally provide schematics or material lists. AST recognizes that some customers with a large installed base of AST products want supportive documentation for their own service organizations. In such cases, customers should contact AST Research corporate offices to consider an appropriate nondisclosure agreement to obtain this documentation.

A Product Comment Form is provided at the back of this publication. If this form has been removed, please address your comments to: AST Research, Inc., Attn: Product Marketing, 2121 Alton Ave., Irvine, CA 92714. AST Research may use or distribute any of the information you supply in any way it deems appropriate without incurring any obligations whatsoever.

Copyright © 1986 AST Research, Inc. All rights are reserved, including those to reproduce this book or parts thereof in any form without permission in writing from AST Research, Inc.

WARNING

This manual and software are protected by United States Copyright law (Title 17 United States Code). Unauthorized reproduction and/or sales may result in imprisonment of up to one year and fines of up to \$10,000 (17 USC 506). Copyright infringers may be subject to civil liability.

TABLE OF CONTENTS

SECTION 1. INTRODUCTION	1-1
1.1 Starting the Diagnostics Program	1-2
1.2 The Configuration Screen	1-2
1.3 The Test Screens	1-4
SECTION 2. MONOCHROME DISPLAY TESTS	2-1
SECTION 3. COLOR DISPLAY TESTS	3-1
SECTION 4. ENHANCED COLOR DISPLAY TESTS	4-1

Figures

Figure 1-1. Configuration Screen	1-3
Figure 2-1. Monochrome Text Attributes Test (Blinking)	2-1
Figure 2-2. Monochrome Text Attributes Test (Intensified)	2-2
Figure 2-3. Monochrome Character Set Test (9 × 14 Pixel Character Box)	2-3
Figure 2-4. Monochrome Character Set Test (8 × 8 Pixel Character Box)	2-4
Figure 2-5. Monochrome Memory Pages Test	2-5
Figure 2-6. Monochrome Intensity Test	2-6
Figure 2-7. 720 x 348 Hercules Emulation Graphics Test	2-7
Figure 3-1. Color Text Attributes Test (Blinking)	3-1
Figure 3-2. Color Text Attributes Test (Intensified)	3-2
Figure 3-3. Color Character Set Test (40-Column Format)	3-3

TABLE OF CONTENTS

(Continued)

Figure 3-4.	Color Character Set Test (80-Column Format)	3-4
Figure 3-5.	Color Memory Pages Test	3-5
Figure 3-6.	320 × 200 Graphics Test (Four-Color)	3-6
Figure 3-7.	640 × 200 Graphics Test (Two-Color)	3-7
Figure 4-1.	Enhanced Text Attributes Test (Blinking)	4-1
Figure 4-2.	Enhanced Text Attributes Test (Intensified)	4-2
Figure 4-3.	Enhanced Character Set Test (8 × 8 Pixel Characters, 40 Columns)	4-3
Figure 4-4.	Enhanced Character Set Test (8 × 14 Pixel Characters, 80 Columns × 43 Rows)	4-4
Figure 4-5.	Enhanced Character Set Test (8 × 8 Pixel Characters, 80 Columns × 43 Rows)	4-5
Figure 4-6.	Enhanced Memory Pages Test	4-6
Figure 4-7.	Enhanced 320 × 200 Graphics Test (Four-Color)	4-7
Figure 4-8.	Enhanced 640 × 200 Graphics Test (Two-Color)	4-8
Figure 4-9.	Enhanced 640 × 350 Primary Colors Test ...	4-9

SECTION 1

INTRODUCTION

A diagnostics program is provided with your AST Research graphics product. The program is on the diagnostics diskette that you received with your AST Research product. This program allows you to check the current graphics configuration of your product, and to determine if its graphics capabilities are working as they should be.

The diagnostics program consists of one configuration screen followed by a series of test screens for the different graphics capabilities of your AST product. There are three sets of tests. One set will be shown if you have a Monochrome Display (MD) attached to your AST product. A second set is shown if you have the Color Display (CD). A third set is shown if your AST product is attached to an Enhanced Color Display (ECD).

After the initial configuration screen, each screen presented tests a particular aspect of the product's graphics capabilities. At the bottom of each screen is a prompt telling you how to proceed to the next test. Generally, you should press the **<Enter>** key (shown as **<CR>** or **<↵>** in the diagnostics tests) to proceed to the next test, or **<Esc>** to quit the program.

If a labeled region on one of the test screens displays a different color or mode from its label, then proceed through the following steps:

- If two areas labeled with different intensities appear the same, adjust the brightness and contrast controls to see if this increases intensity differences.
- Check your graphics configuration switch settings and Monitor Selection jumper block settings to be sure they are set correctly. (Refer to the User's Manual for your AST Research product for information on switch settings.) Call AST Research Technical Support if there are still problems with the diagnostics displays.

1.1 Starting the Diagnostics Program

Before you begin using the diagnostics program, you should make a backup copy of the diagnostics diskette, using the DOS COPY command. You should then store the original diagnostics diskette in a safe place and use the copy to run the diagnostics program. This way, you will avoid any possibility of damaging your original diagnostics diskette while running the diagnostics program.

To start the diagnostics program, place the copy you have made of the diagnostics diskette in drive A: (after booting up with a DOS boot diskette) and type in the following command at the DOS prompt:

```
A>DIAG <Enter>
```

After you enter this command, the diagnostics program presents either an error message indicating that no AST Research product is present, or a configuration screen listing the basic graphics configuration of the AST product.

1.2 Configuration Screen

For *all* AST Research product configurations, the diagnostics program presents as its first screen a configuration screen that allows you to check whether your AST product's graphics configuration is correct. A sample configuration screen for a monochrome monitor and AST product follows:

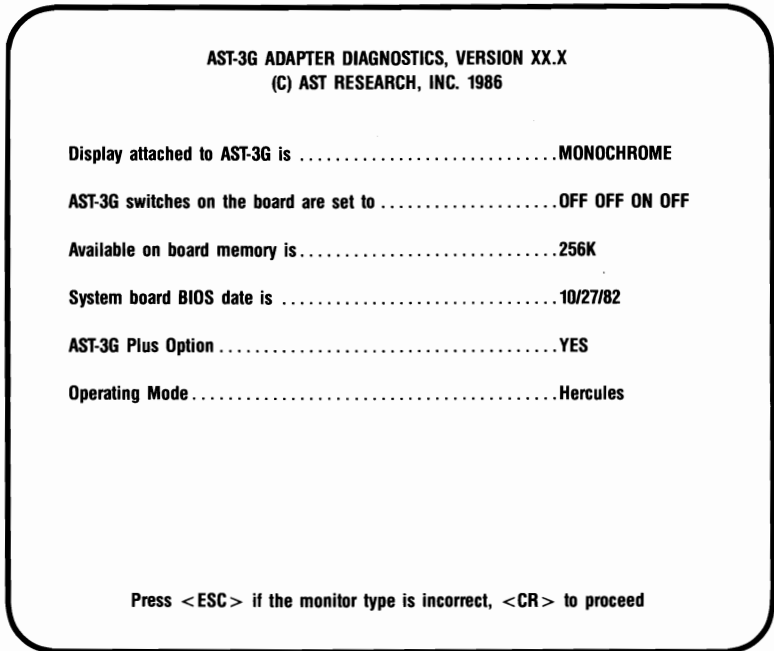


Figure 1-1. Configuration Screen.

The following paragraphs describe the items on the configuration screen.

Display attached to AST-3G

The choices for the display type are MONOCHROME, COLOR, and ENHANCED (corresponding to the MD, CD, or ECD monitor). *If the value shown is not accurate, then your graphics switch settings are probably wrong.* Check the User's Manual for your product for the available graphics switch settings and their corresponding configurations.

AST-3G switches on the board

The current values for the four graphics configuration switches are shown. If they are not set correctly, then change your switch settings and reboot.

Available on board memory

Available on-board memory displays the amount of graphics memory available on the AST product. This should be either 64 or 256 kilobytes (KB).

System Board BIOS date

The system board Read Only Memory (ROM) Basic Input/Output System (BIOS) date for your system is shown. *If this date is earlier than 10/27/82*, you need to have the new ROM BIOS installed in your PC system. The date is displayed even if the AST product is not present in the system. Thus you can check the BIOS date *before* you install the AST product.

AST-3G Plus Option

If the Plus option is present, this line will show YES. Otherwise it will show NO. Several products (such as AST-3G Pak™) have the Plus option as standard equipment.

Operating Mode

If the Plus option is present, then the operating mode is shown, as in Figure 1-1. The operating mode will be one of the following: EGA, CGA, or Hercules. Several products have the Plus option as standard equipment.

1.3 Test Screens

Different sets of screens are displayed for different types of monitors. One set is displayed for each type of monitor — the Monochrome Display (MD), the Color Display (CD), and the Enhanced Color Display (ECD). In the following sections, a description of each test is given, followed by a sample screen. If the display is malfunctioning, it may be due to incorrect graphics configuration switch settings or jumper settings. If your switch and jumper settings are correct, then your product may need repairs.

SECTION 2

MONOCHROME DISPLAY TESTS

If you are using a Monochrome Display (MD), you will be presented with a set of tests designed for this configuration, as follows.

Figure 2-1 shows a monochrome text attributes test. Sixteen background text attributes and sixteen foreground text attributes are shown in labeled rectangles. The attributes labeled blinking can also be displayed as intensified. To switch to the intensified attributes, press the <Space> bar.

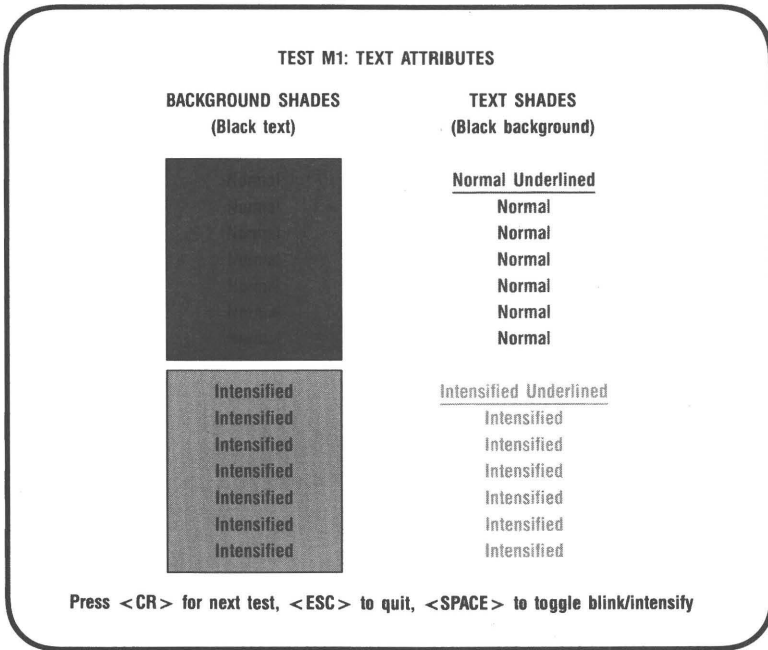
TEST M1: TEXT ATTRIBUTES

BACKGROUND SHADES (Black text)	TEXT SHADES (Black background)
Normal Normal Normal Normal Normal Normal Normal	<u>Normal Underlined</u> Normal Normal Normal Normal Normal Normal
Blinking Blinking Blinking Blinking Blinking Blinking Blinking	<u>Intensified Underlined</u> Intensified Intensified Intensified Intensified Intensified Intensified

Press <CR> for next test, <ESC> to quit, <SPACE> to toggle blink/intensify

Figure 2-1. Monochrome Text Attributes Test (Blinking).

Figure 2-2 shows a monochrome text attributes test. Sixteen background text attributes and sixteen foreground text attributes are shown in labeled rectangles. Some of the attributes labeled intensified can also be displayed as blinking. To switch to the blinking attributes, press the **<Space>** bar.



**Figure 2-2. Monochrome Text Attributes Test
(Intensified).**

Figure 2-3 shows the character set test. The available character set is shown. Each character is 9 pixels wide by 14 pixels high. The characters should show up clearly.

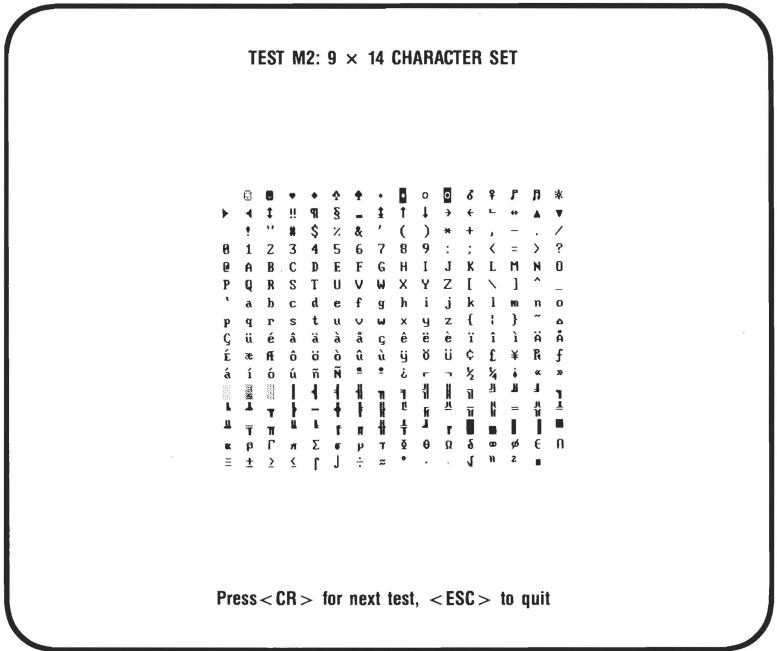


Figure 2-3. Monochrome Character Set Test (9 x 14 Pixel Character Box).

Figure 2-4 shows the character set test. The available character set is shown; each character is 8 pixels wide by 8 pixels high. The characters should show up clearly.

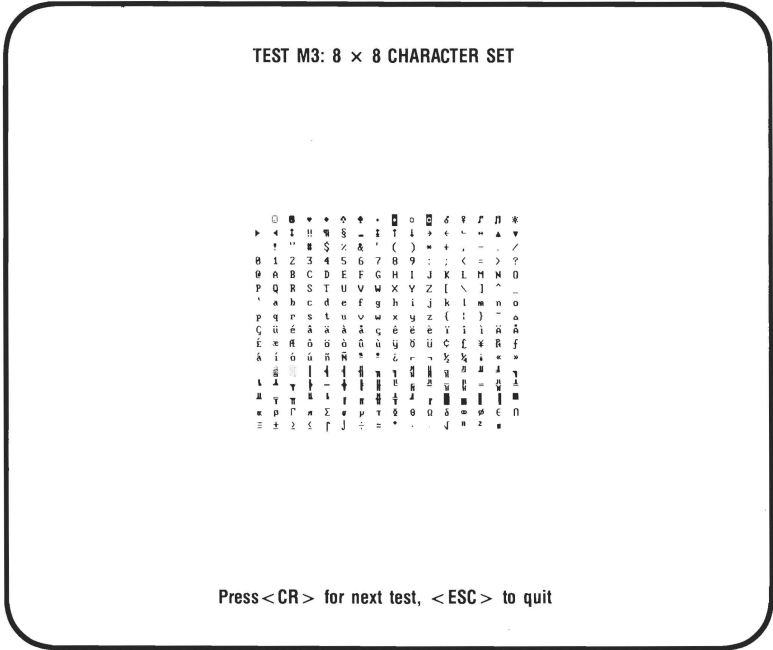


Figure 2-4 Monochrome Character Set Test (8 x 8 Pixel Character Box).

Figure 2-6 shows the monochrome graphics intensity test for graphics with a resolution of 640 x 350 pixels. This screen shows four different intensities available for graphics with an AST product: black, normal, intensified, or blinking. If normal and intensified appear the same, adjust the contrast on your monitor. The intensities should all appear different.

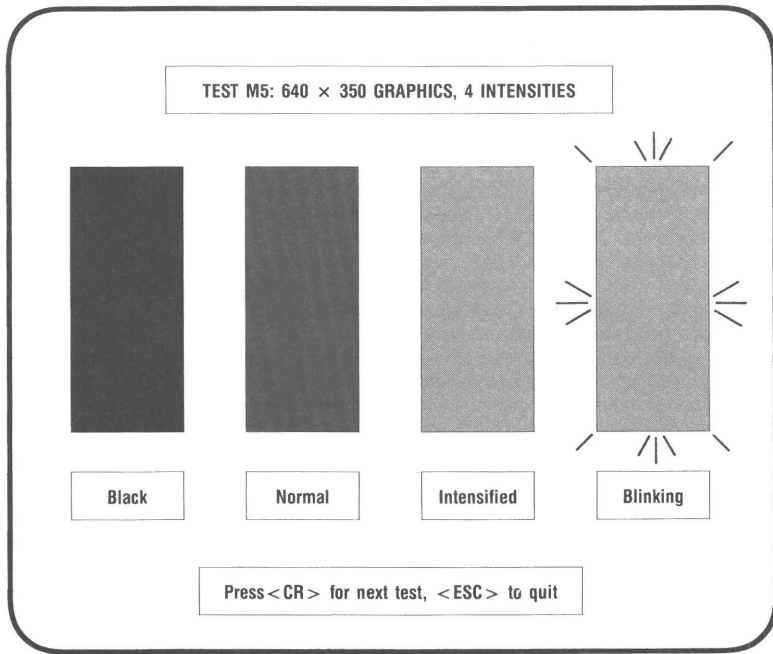


Figure 2-6. Monochrome Intensity Test.

Figure 2-7 shows the test for 720 x 348 pixel, Hercules-emulation graphics. A black square and a white square are shown.

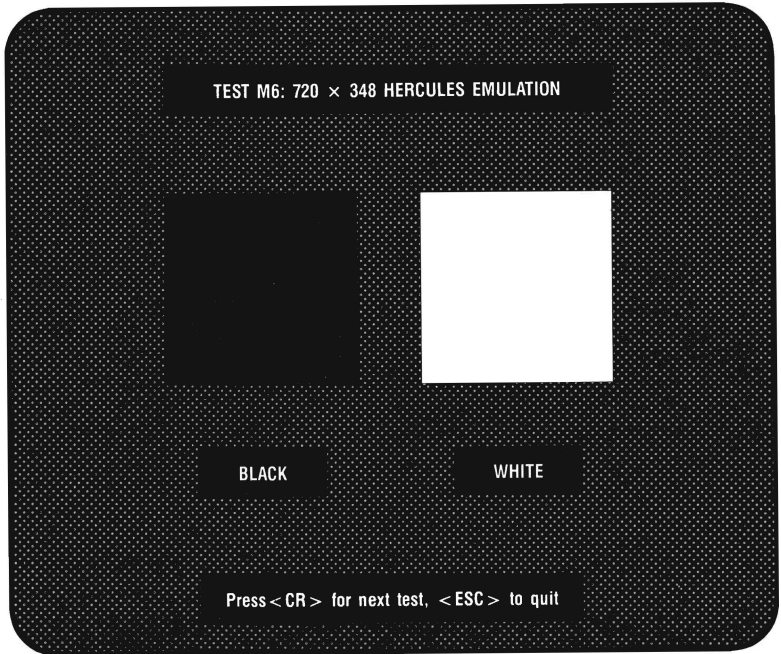


Figure 2-7. 720 x 348 Hercules Emulation Graphics Test.

(This page intentionally left blank)

SECTION 3

COLOR DISPLAY TESTS

If you are using a Color Display (CD), you will be presented with a set of tests designed for this configuration, as follows.

Figure 3-1 shows the color text attributes test. This test displays text and background using 16 different colors. Each field is labeled with the name of the color meant to appear there. The 16 text colors are shown on the right, and the 16 background colors are shown on the left. The second half of the background colors can be either intensified or blinking. To switch from blinking to intensified, press the <Space> bar.

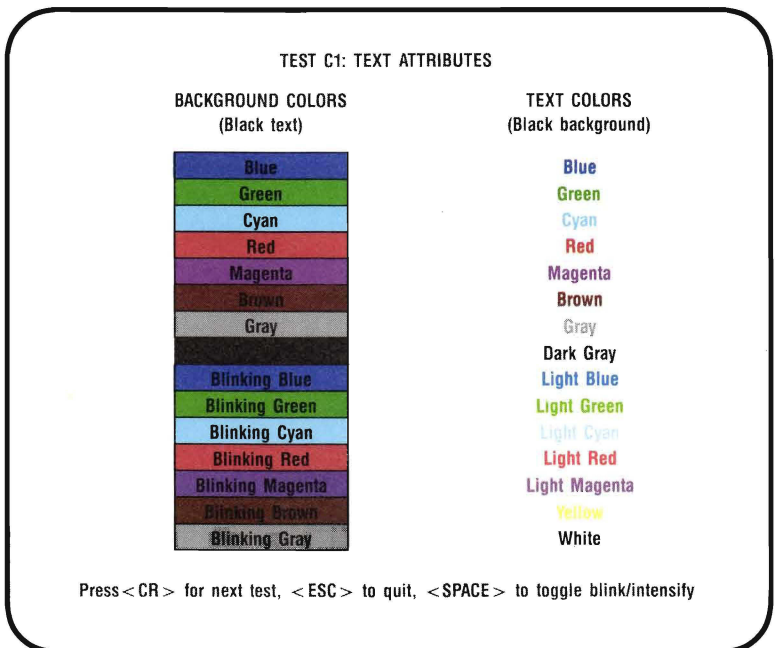


Figure 3-1. Color Text Attributes Test (Blinking).

Figure 3-2 shows the color text attributes test. This test displays text and background using 16 different colors. Each field is labeled with the name of the color meant to appear there. The 16 text colors are shown on the right, and the 16 background colors are shown on the left. The second half of the background colors can be either intensified or blinking. To switch from intensified to blinking, press the <Space> bar.

TEST C1: TEXT ATTRIBUTES

BACKGROUND COLORS (Black text)	TEXT COLORS (Black background)
Blue	Blue
Green	Green
Cyan	Cyan
Red	Red
Magenta	Magenta
Gray	Brown
Gray	Gray
Light Blue	Dark Gray
Light Green	Light Blue
Light Cyan	Light Green
Light Red	Light Cyan
Light Magenta	Light Red
Yellow	Light Magenta
white	Yellow
	White

Press <CR> for next test, <ESC> to quit, <SPACE> to toggle blink/intensify

**Figure 3-2. Color Text Attributes Test
(Intensified).**

Figure 3-3 shows the available character set in a 40-column wide screen.

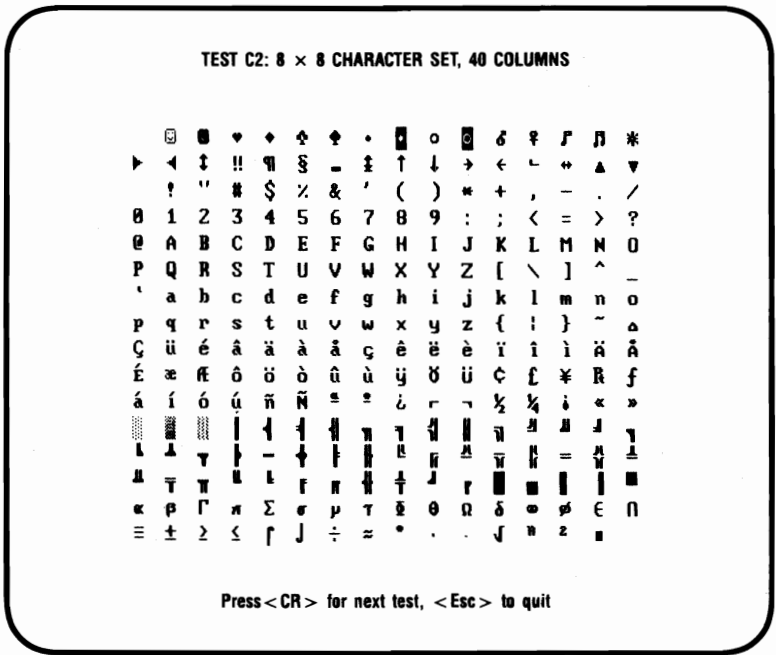


Figure 3-3. Color Character Set Test (40-Column Format).

Figure 3-6 shows the test for 320 × 200 pixel resolution graphics. This screen shows the four basic color components that provide the colors for this configuration: black, blue, green, and red. These colors are shown in four rectangular boxes. The colors of the boxes should match their labels.

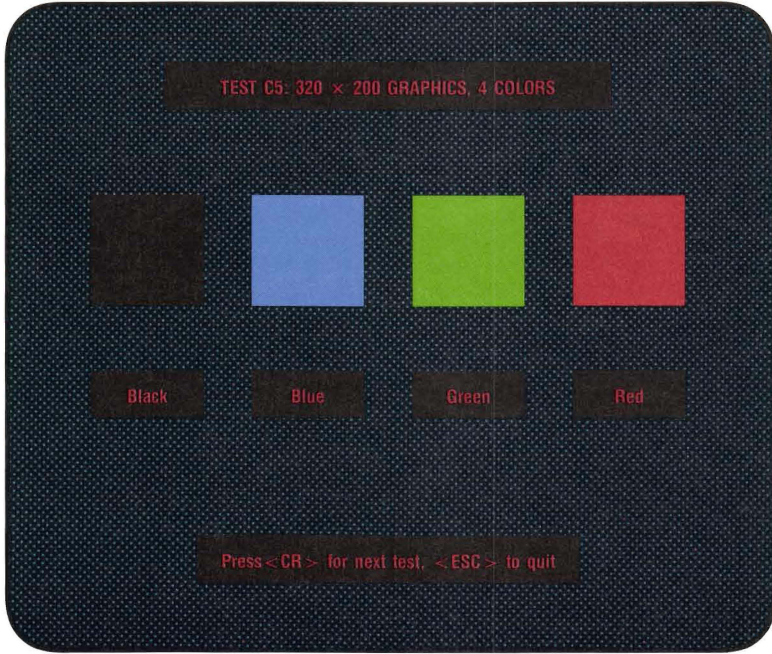


Figure 3-6. 320 × 200 Graphics Test (Four-Color).

Figure 3-7 shows the test for two-color graphics with a resolution of 640 × 200 pixels. This screen displays the colors black and white in two rectangular boxes. The colors of the boxes should match their labels.

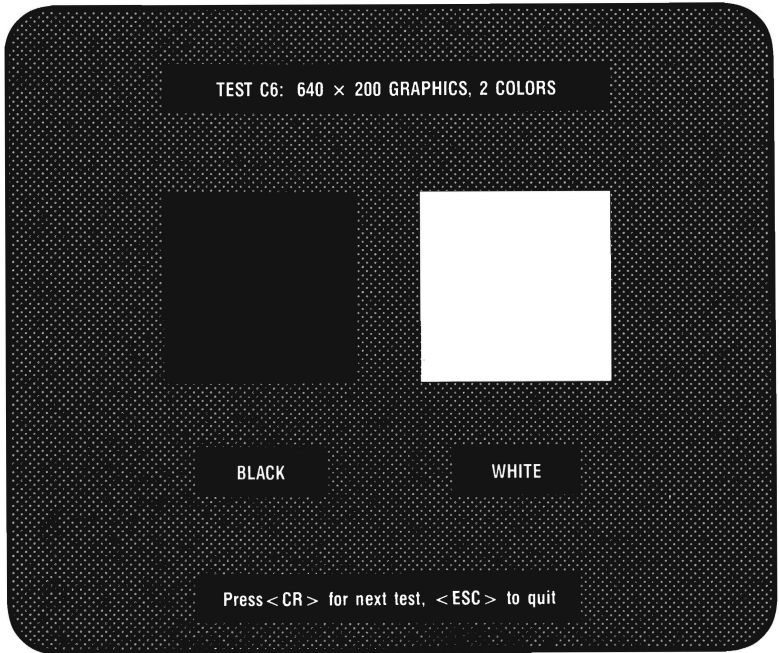


Figure 3-7. 640 x 200 Graphics Test (Two-Color).

(This page intentionally left blank)

SECTION 4

ENHANCED COLOR DISPLAY TESTS

If you are using an Enhanced Color Display (ECD), you will be presented with a set of tests designed for this configuration, as follows.

Figure 4-1 shows the enhanced color text attributes test. This screen displays text and background using 16 different colors. Each field is labeled with the name of the color meant to appear there. The 16 text colors are shown on the right. On the left, the 16 background colors are shown. The second half of the background colors can be either intensified or blinking. To switch from blinking to intensified, press the **<Space>** bar.

TEST E1: TEXT ATTRIBUTES

BACKGROUND COLORS (Black text)	TEXT COLORS (Black background)
Blue	Blue
Green	Green
Cyan	Cyan
Red	Red
Magenta	Magenta
Brown	Brown
Gray	Gray
Dark Gray	Dark Gray
Blinking Blue	Light Blue
Blinking Green	Light Green
Blinking Cyan	Light Cyan
Blinking Red	Light Red
Blinking Magenta	Light Magenta
Blinking Brown	Yellow
Blinking Gray	White

Press <CR> for next test, <ESC> to quit, <SPACE> to toggle blink/intensify

Figure 4-1. Enhanced Text Attributes Test (Blinking).

Figure 4-2 shows the enhanced color text attributes test. This screen displays text and background using 16 different colors. Each field is labeled with the name of the color meant to appear there. The 16 text colors are shown on the right. On the left, the 16 background colors are shown. The second half of the background colors can be either intensified or blinking. To switch from intensified to blinking, press the **<Space>** bar.

TEST E1: TEXT ATTRIBUTES

BACKGROUND COLORS (Black text)	TEXT COLORS (Black background)
Blue	Blue
Green	Green
Cyan	Cyan
Red	Red
Magenta	Magenta
Brown	Brown
Gray	Gray
Dark Gray	Dark Gray
Light Blue	Light Blue
Light Green	Light Green
Light Cyan	Light Cyan
Light Red	Light Red
Light Magenta	Light Magenta
Yellow	Yellow
White	White

Press <CR> for next test, <ESC> to quit, <SPACE> to toggle blink/intensify

**Figure 4-2. Enhanced Text Attributes Test
(Intensified).**

Figure 4-3 shows an enhanced color character set test. This screen shows the available character set with each character 8 pixels wide by 8 pixels high. The screen is 40 columns wide.

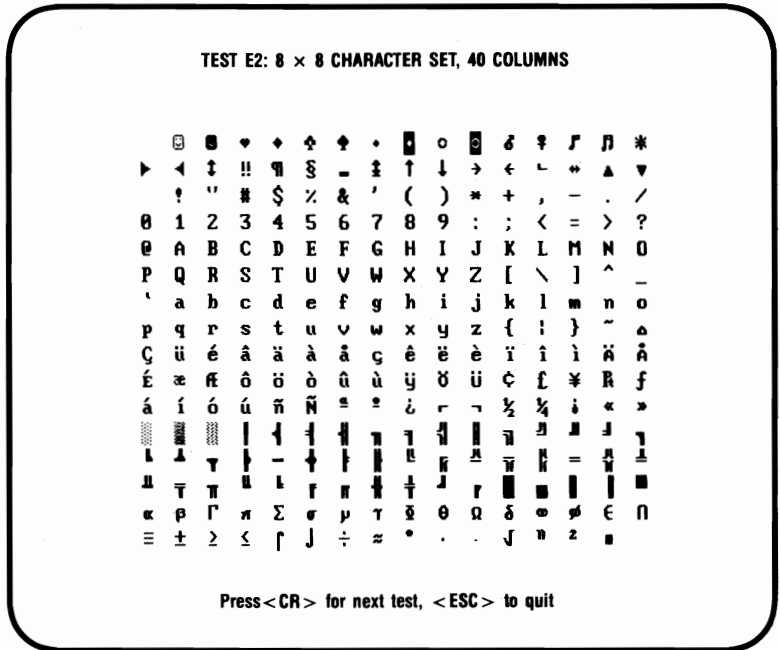


Figure 4-3. Enhanced Character Set Test (8 x 8 Pixel Characters, 40 Columns).

Figure 4-7 shows the test for four-color, 320 × 200 pixel resolution graphics. This screen shows the four basic color components that provide the colors for this configuration: black, blue, green, and red. The colors should match their labels.

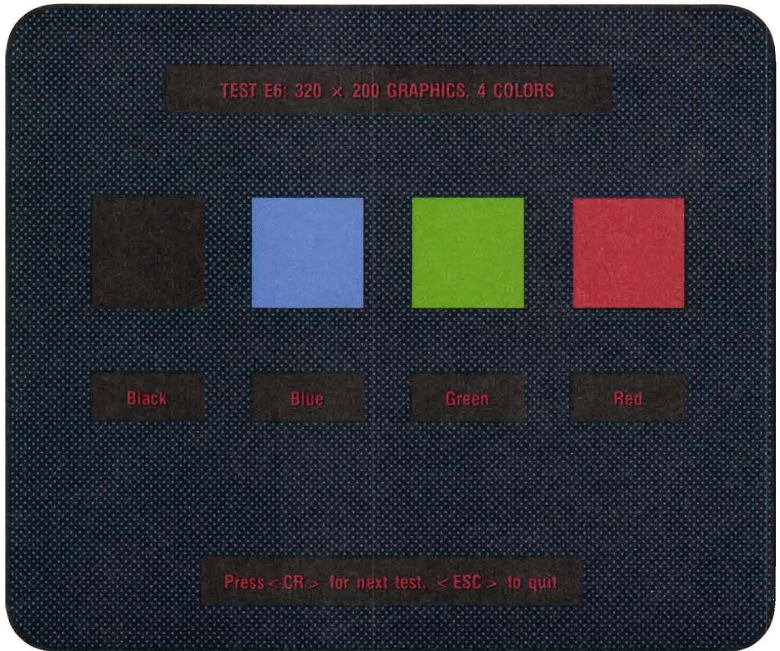


Figure 4-7. Enhanced 320 x 200 Graphics Test (Four-Color).

Figure 4-8 shows the test for two-color, 640 × 200 pixel resolution graphics. This screen displays the colors black and white in labeled, rectangular boxes.

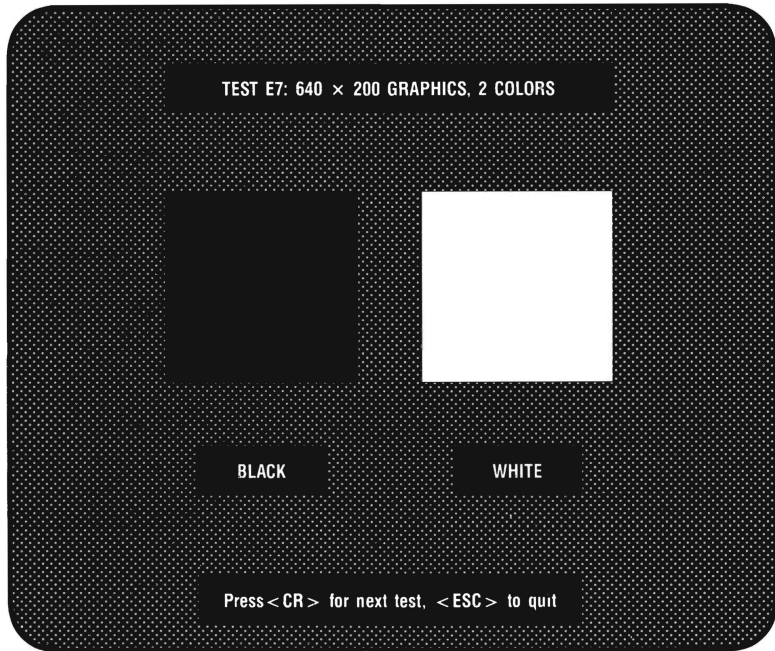


Figure 4-8. Enhanced 640 x 200 Graphics Test (Two-Color).

Figure 4-9 shows the test for different intensities of four colors with 640 × 350 pixel resolution graphics. Blue, green, red and gray are shown in four intensities each. A total of 16 boxes are shown. Except for the first column, each box should appear slightly different. If the last two red boxes are the same, even after your contrast and brightness controls are checked, then the Monitor Selection jumper may be set wrong.

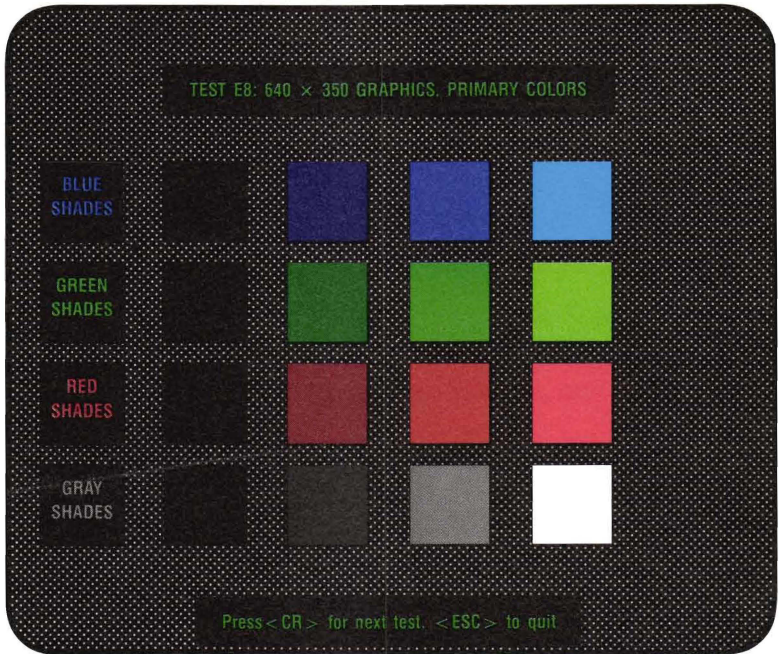


Figure 4-9. Enhanced 640 × 350, Primary Colors Test.

(This page intentionally left blank)

000369-001 A