

---

# User Manual for Neoware Appliances Running NeoLinux



## Hotkey Quick Reference Guide

To...	Press....
Display the Neoware desktop	CTRL + ALT + END
Display the next/previous connection	CTRL + ALT + ↑ or ↓
Change Window Focus	CTRL + ALT + TAB

---



© 2001 by Neoware Systems, Inc.  
400 Feheley Drive  
King of Prussia, PA 19406  
610.277.8300

E-mail: [info@neoware.com](mailto:info@neoware.com)

Web: For the most recent version of this manual, please visit Neoware's Web site at  
<http://www.neoware.com/manuals.html>

Copyright 2001 by Neoware Systems, Inc. This manual is copyrighted by Neoware Systems, Inc. All rights are reserved. This document may not, in whole or in part, be copied, photocopied, reproduced, translated, or reduced to any electronic medium or machine-readable form without prior consent, in writing, from Neoware Systems, Inc.

Neoware, NeoLinux, Neostation, Eon, @work, and @workStation are trademarks of Neoware Systems, Inc. Java is a registered trademark of Sun Microsystems, Inc. Windows is a registered trademark of Microsoft Corporation. MetaFrame, WinFrame, and ICA are registered trademarks of Citrix Systems, Inc. Other trademarks used in this manual are the property of their respective owners.

Disclaimer: The information provided in this manual is intended for instructional purposes only and is subject to change without notice. Neoware Systems, Inc., accepts no responsibility or liability for errors, omissions, or misleading information that may be contained in this manual.

Production note: This manual was entirely designed, written, edited, and illustrated on Neoware information appliances using embedded NeoLinux software, Windows NT 4.0 Terminal Server Edition with MetaFrame, PhotoShop, and FrameMaker.

12.14.2001

---

## **FCC regulatory and safety information**

---

FCC regulatory and safety information can be found in the Quick-Start Guide that came with your appliance, and on the Support section of the Neoware website which can be found at:

**<http://www.neoware.com/support.html>**

## **CANADA ICES/NMB-003 Class/Classe (B)**

---

This Class B digital apparatus complies with Canadian ICES-003.

Cet appareil numérique de la classe B est conforme à la norme NMB-003 du Canada.

## **Neoware Hardware Warranty**

---

Neoware hardware warranties can be found in the Quick-Start Guide that came with your appliance, and on the Support section of the Neoware website which can be found at:

**<http://www.neoware.com/support.html>**

---

## Safety Instructions

---

Please read these safety instruction carefully and keep this user's manual for later reference.

1. **Before removing the outer case from the appliance always disconnect the AC power cord to prevent the possibility of dangerous electrical shock.**
2. **Before cleaning, disconnect the appliance from AC power. Do not use liquid or sprayed cleaning products to clean the unit. Instead, use a moistened sheet or cloth for cleaning.**
3. **Be sure not to expose the appliance to excessive humidity.**
4. **Be sure to install the appliance on a secure surface. A falling appliance could cause injury.**
5. **Place the power cord in such a way to avoid people stepping on it. Do not place anything over the power cord.**
6. **Be sure to note all cautions and warnings on the appliance.**
7. **If the appliance is not used for a long period of time, disconnect the AC power to avoid damage caused by voltage transients.**
8. **Never pour any liquid into any appliance openings: This could cause fire or electrical shock.**
9. **If one of the following situation occurs, be sure to get the appliance checked by a qualified service technician:**
  - a. **The power cord or plug is damaged.**
  - b. **Liquid penetrates the appliance case.**
  - c. **The appliance is exposed to moisture.**
  - d. **The appliance does not work well or you cannot get it to work according to the user's manual.**
  - e. **The appliance has been dropped or damaged.**
  - f. **If the appliance has obvious signs of breakage.**
10. **The appliance should be stored and used only in temperature and humidity controlled environments. Storing appliances below -20°C (-4°F) or above 60°C (140°F) may cause damage.**
11. **The sound pressure level at the operators position according to IEC 704-1:1982 is equal or less to 70dB(A).**
12. **The input power cord shall be minimum H05VV-F, 3G, 0.75mm<sup>2</sup>, rate minimum 6A.**
13. **The appliance should be used only where ambient air temperatures are maintained below 40°C.**

# *Table of Contents*

---

FCC regulatory and safety information	iii
CANADA ICES/NMB-003 Class/Classe (B)	iii
Neoware Hardware Warranty	iii
Safety Instructions	iv

## ***Introduction*** 1

Overview	1
Purpose and intended readers	1
Topics covered	1
What is an Computing Appliance?	1
A new way to use Windows	1
ezConnect	2
Neoware Appliances	2
Embedded NeoLinux Software	3
Getting More Information	3
The Internet	3
Technical support	4

## **CHAPTER 1** *Setting up Your Appliance* 5

Unpacking Your Neoware Appliance	5
----------------------------------	---

Packaging contents 5

Connecting the Components 6

    Back panel connectors 6

    Connecting the cables 6

    Connecting Parallel and Serial peripheral devices 7

    Connecting USB peripheral devices 8

Arranging Your Work Area 10

    Getting comfortable 10

**CHAPTER 2 *Configuring Your Network Settings* 11**

Selecting the Network Settings 11

    Do you need to configure? 11

    Network Settings 11

**CHAPTER 3 *ezConnect - The Neoware Connection Manager* 15**

Managing Connections 15

    ezConnect 15

    Creating connections 16

    Editing Connections 16

    Deleting Connections 16

    Copying Connections 17

Using Connections 17

    Establishing a Connection 17

    Ending a Connection 17

    Switching between Connections 18

    Session Management 18

Appliance Properties 19

    Security 19

    Printers 21

    Sound 22

    Servers 22

    Setting the Date and Time 24

---

## **Table of Contents**

Desktop Settings	25
Messages and Console	26
Factory Reset	27
Connection Properties	27
Global ICA Settings	27

### **CHAPTER 4 *ICA Connections* 29**

Configuring ICA Connections	29
Creating an ICA connection	29
Editing an ICA connection	34

### **CHAPTER 5 *RDP Connections* 37**

Configuring RDP Connections	37
Creating an RDP connection	37
Editing an RDP connection	41

### **CHAPTER 6 *Basic Terminal Connections* 43**

Configuring Basic Terminal Connections	43
Creating a Basic Terminal connection	43
Editing a Basic Terminal connection	46

### **CHAPTER 7 *Netscape Connections* 47**

Configuring Netscape Connections	47
Creating a Netscape connection	47
Editing a Netscape connection	51
Printing Netscape pages	51

### **CHAPTER 8 *X Window Connections* 53**

Configuring X Window Connections	53
----------------------------------	----

Creating an X Window Connection 53

Editing an X Window connection 57

**CHAPTER 9 *Custom Connections* 59**

Configuring Custom Connections 59

Creating a Custom connection 59

Editing a Custom connection 61

**CHAPTER 10 *Pericom Terminal Connections* 63**

Configuring Pericom Terminal Connections 63

Creating a Pericom Terminal connection 64

Editing a Pericom Terminal connection 67

Printing text screens 67

Setting up a text printer 68

**CHAPTER 11 *Using the NeoLinux Desktop* 71**

Getting Started 71

Overview 71

Using the Taskbar 72

Using the Desktop Divider 72

Using NeoLinux Windows 73

Using the window controls 73

**Appendix A: *Advanced NeoLinux Configuration* 75**

Enabling the USB Controller in the appliance BIOS 75

Setting the USB Controller setting in the BIOS to Enabled 75

Setting your appliance to ignore BOOTP or DHCP responses 76

Editing the pump.conf configuration file to ignore BOOTP or DHCP responses 76

***Index* 79**



# Introduction

*This chapter describes the purpose and main topics of this manual, as well as the basic features of the Neoware appliances.*

---

## Overview

---

### **Purpose and intended readers**

This manual explains how to use Neoware appliances that are running Neoware NeoLinux Software. It's intended primarily for administrators and users of NeoLinux on the Neoware appliances.

### **Topics covered**

We recommend that you read the chapters in this manual in order. The main topics covered are:

- Unpacking and setting up your appliance.
- Configuring your appliance for your network.
- Changing settings on your appliance.
- Creating and using connections to servers, mainframes, and intranets.

The appendixes cover additional topics that you may need to know.

## What is an Computing Appliance?

---

### **A new way to use Windows**

Computing appliances are smart devices that provide access to programs running on network servers. Once a connection is made to a server, depending on the version of software installed, you can use

your favorite Windows programs such as Microsoft Office or Adobe Photoshop® in the familiar Windows® desktop, connect to LINUX/UNIX servers, mainframes and minicomputers via telnet, appliance emulations, and X Window connections, and connect to intranet / Internet applications through Netscape Navigator.

Generally as you work, your appliance sends keystrokes and mouse clicks to the server, which responds with screen updates for your monitor. Most of the processing occurs on the server. Due to the speed of modern computer networks, this exchange happens as fast, if not faster, than processing on a personal computer.

Computing appliances aren't difficult to use. If you know how to use a personal computer, or even if you don't, you can use an computing appliance.

## **ezConnect**

Neoware ezConnect, the NeoLinux connection manager, consists of a simple, easy, and highly customizable user interface for Linux, that shields users from the complexity of the Linux operating system, and is designed specifically for appliance computing applications. ezConnect allows users or administrators to create a variety of connections to run Microsoft Windows applications on servers, UNIX applications via the X Window protocol, terminal connections to mainframes and minicomputers, Netscape Navigator Internet sessions for applications such as kiosks, and custom connections to launch virtually any Linux application. ezConnect also allows users to customize the operation of the appliance.

## **Neoware Appliances**

Neoware appliances are sleek computing devices that have no hard drive, fan, or other moving parts, which makes them extremely reliable, as well as silent. They use standard VGA, SVGA, and XVGA-type monitors, PS/2 mouse and keyboard, and pointing devices. Different models may contain different configurations of parallel port, serial port(s), and USB ports for peripheral devices that may include printers, modems, floppy drives, zip drives, cd-roms, and bar code scanners. The version of software installed in your thin client appliance will dictate which types of peripherals may be used.

Your appliance can automatically connect to either 10BaseT or 100BaseT (twisted-pair) Ethernet networks, as well as make serial port connections with or without a modem.

## **Embedded NeoLinux Software**

Your appliance arrives with Neoware's NeoLinux software pre-installed. This software is installed in the local Flash disk memory internally installed in your appliance.

NeoLinux provides powerful and flexible computing capabilities for networks that have many types of servers as well as Web pages. Using NeoLinux, your appliance can start simultaneous, multiple connections to Windows 2000 Servers, Windows NT Terminal Servers, UNIX-based servers, mainframes, minicomputers, intranets, and the Internet.

### **FYI**

To make Windows connections using ICA, the server must be running Citrix MetaFrame, WinFrame, or Citrix Device Services (CDS).

Connections to Windows 2000 Server and NT-based servers are made via Citrix's Independent Computing Architecture (ICA®) protocol, as well as Remote Desktop Protocol (RDP). Access to UNIX-based servers can be made by telnet connections and by X Window protocols. In addition, the optional teamX suite provides more than 30 terminal emulations.

NeoLinux supports DHCP and BOOTP remote configuration services, and NFS file transfer protocol. It also includes a local Netscape® Navigator browser.

## **Getting More Information**

---

### **The Internet**

You can find current and archival information about Neoware products, including the latest software updates, at:

<http://www.neoware.com>

In addition, this user manual and other Neoware documentation are available on the Neoware Web site as for reading or downloading.

**Technical support** For technical support, call Neoware at +1.610.277.8300, or send an e-mail message to *support@neoware.com*.

# *Setting up Your Appliance*

*This chapter describes how to unpack and set up your Neoware Appliance.*

---

## Unpacking Your Neoware Appliance

---

### **Packaging contents**

Your Neoware Appliance typically is shipped in cartons containing these items. Depending on the shipping configuration, one or more of the items may be contained in separate shipping cartons (such as a monitor, keyboard, and mouse):

#### **Neoware Appliance**

- A keyboard with cable attached.
- A mouse with cable attached.
- A power cable.
- A stand for stabilizing your appliance in a vertical orientation.
- Neoware appliance Quick-Start Guide.

#### **Monitor**

- A monitor power cable (attached to some monitors).
- A monitor video cable (attached to most monitors).
- A tilt/swivel base, attached or unattached.

To unpack your appliance, open the cartons carefully, remove the components, and save the packing materials in case you need to repack them.











## Connecting the Components

### Back panel connectors

#### FYI

The serial and parallel ports can be used with ICA and terminal emulation connections.

The following is an explanation of the different connections that can be found on Neoware appliances.

- MOUSE is a PS/2-type mouse port. 
- KEYBOARD is a PS/2-type keyboard port. 
- LAN is an RJ-45 jack. The appliance automatically detects and connects to either 10BaseT or 100BaseT (twisted-pair) Ethernet. 
- PARALLEL is a standard DB-25 parallel port for local printers. 
- COM 1 and COM 2 are DB-9, RS-232 serial ports. Depending on which software version is loaded in the thin client appliance, serial ports may be used for peripheral devices such as modems, personal digital assistants (PDAs), and bar code scanners. 
- USB ports (two Type A USB ports) 
- MIC is a 3.5 mm microphone jack. 
- LINE IN is a 3.5 mm line audio input jack. 
- LINE OUT is a 3.5 mm audio output jack. 
- MONITOR is a standard DB-15, high-density, VGA-type monitor connector. 
- The internal power supply connects through the supplied power cable. It automatically detects and accepts either 120 VAC or 240 VAC line voltage.

### Connecting the cables

- 1 Arrange your appliance and monitor in your work area.
- 2 Connect the monitor power cable to a power source.
- 3 Connect the power cord into the socket. Make sure the appliance is powered off.

**4 Connect the keyboard cable to the KEYBOARD port.**

**5 Connect the mouse cable to the MOUSE port.**

**6 Connect the monitor video cable to the MONITOR port.**

Don't overtighten the screws. The video cable connection to the monitor varies. Some monitors have attached video cables.

**7 Connect a twisted-pair, 10BaseT or 100BaseT Ethernet cable into the LAN jack.**

This RJ-45 jack looks like a telephone jack.

### **Connecting Parallel and Serial peripheral devices**

You can connect a modem, printer, bar code scanner, and other peripheral devices to your appliance.

**1 If your appliance is turned on, log off all its open connections, and then turn off the appliance.**

**2 If you have a local printer, connect its cable to the PARALLEL port.** You can also attach local serial printers to either serial port: COM 1 or COM 2.

**3 If you have an external modem, bar code scanner, or other serial device, connect its cable to a serial port (COM 1 or COM 2).** Which serial port devices will work with your thin client appliance depends on the software version loaded in the device. Not all software versions support all serial devices.

**4 Turn on your appliance and then the peripheral device.**

## Connecting USB peripheral devices

### Note

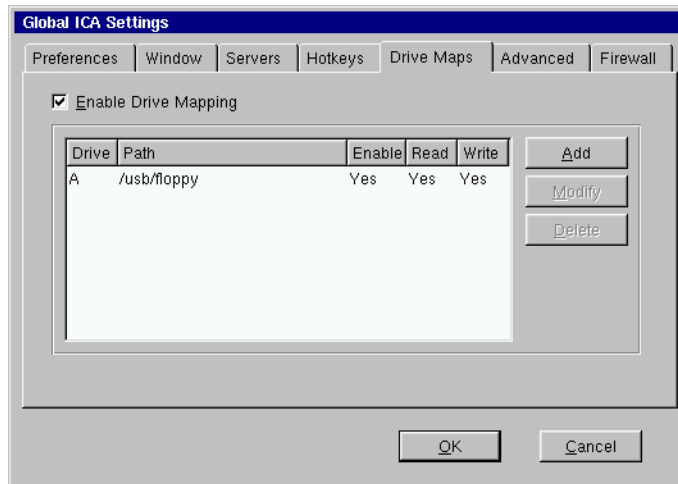
In order to install and use USB peripheral devices it is necessary that the USB Controller settings in your appliance's BIOS be enabled. If you are upgrading from an earlier version of NeoLinux, you will need to enable this setting. For information on changing this setting in the BIOS see "Enabling the USB Controller in the appliance BIOS" on page 75.

You can connect USB external drives to your NeoLinux appliance, including floppy drives, zip drives, and CD-ROM drives.

- 1 In the ezConnect (Neoware Connection Manager) menu bar, select Settings | Connection Properties | Global ICA Settings.



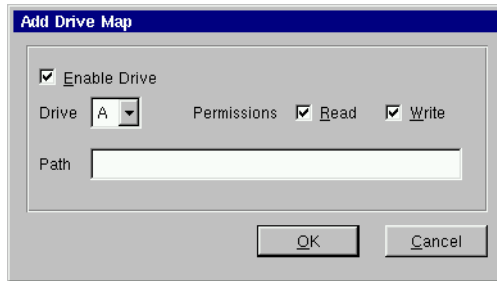
- 2 When the Global ICA Connection Properties tabbed dialog appears, select the Drive Maps tab.



- 3 Click the Enable Drive Mapping checkbox.
- 4 Click the Add button.
- 5 When the Setup Drive Mapping dialog appears, select the drive letter you would like to represent the USB peripheral device you are setting up and type the path of the drive in the



**path field. When finished Click OK.**



**Note:** Depending on the device you are connecting the path will be one of the following:

- Zip drive - /usb/zip
- Floppy Drive - /usb/floppy
- Cd drive - /usb/cdrom

**6 Click OK in the Global ICA Connection Properties tabbed dialog.**

The external USB drive will now work when using the NeoLinux operating system and when connecting to ICA sessions with MetaFrame servers.

## Arranging Your Work Area

---

**Getting comfortable** These tips will help reduce eye strain and body fatigue when using your appliance:

- Adjust your chair seat level so that your feet are flat on the floor, your legs form a right angle with the floor, your knees are free of the chair seat, and your lower back is fully supported.
- Adjust the chair height so the keyboard and mouse are at elbow height so your wrists are straight and supported.
- Maintain a neutral neck posture with the top of the monitor no higher than your eye level.
- Adjust the monitor and lighting to reduce glare on the screen and to place the monitor at a correct distance for your vision.
- Take periodic breaks to stretch your arms and wrists and rest your eyes.

## CHAPTER 2

# Configuring Your Network Settings

*This chapter describes how to initially configure your appliance for your network.*

## Selecting the Network Settings

### Do you need to configure?

#### FYI

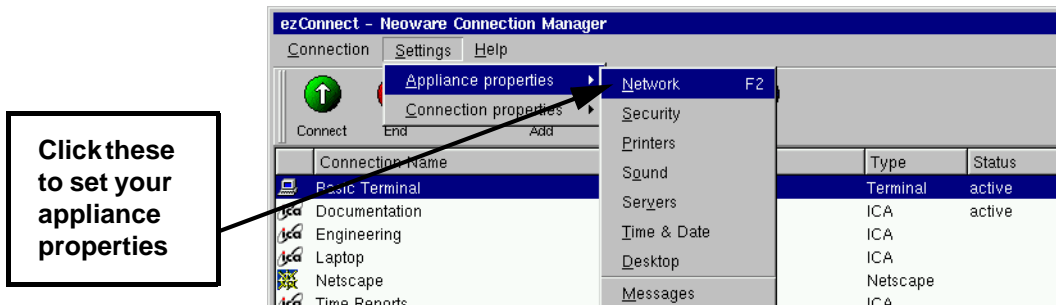
DHCP and BOOTP automatically supply the IP address and other setting for your appliance when it starts up.

To use your appliance on a network, it must be assigned a unique Internet Protocol (IP) address for identification. Your network may also require a few other settings.

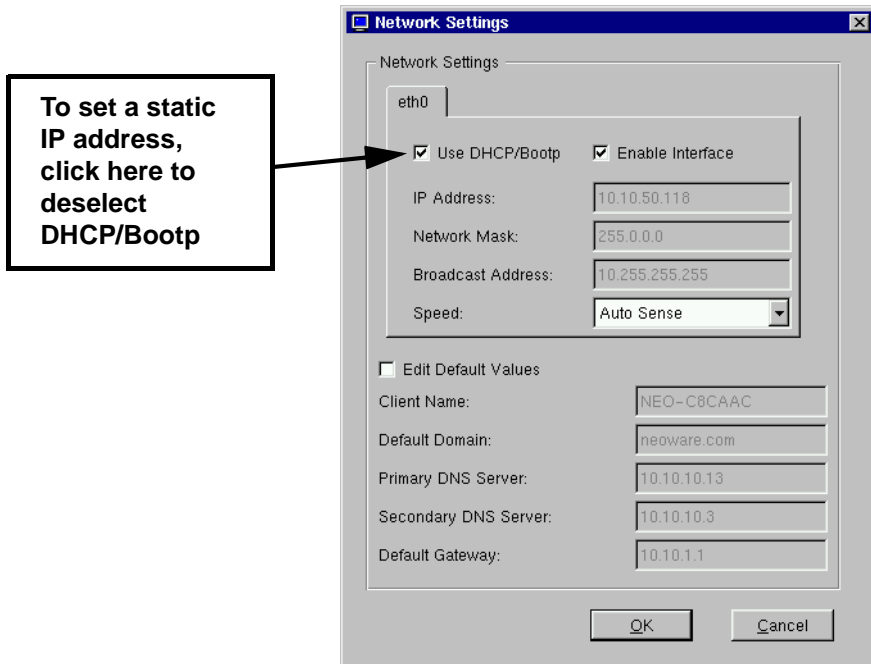
If your network uses a remote configuration service such as the Dynamic Host Configuration Protocol (DHCP) or the Bootstrap Protocol (BOOTP), your appliance may not need to be configured. In that case, all you do is turn on your appliance. Ask your system administrator if your network uses DHCP or BOOTP.

### Network Settings

To configure your appliance's network settings select Settings | Appliance Properties | Network from the ezConnect (Neoware Connection Manager) menu bar or press the F2 key.



- *Network Settings*



The following values may be set under Network Settings where a tab exists for each interface:

**DHCP/Bootp Server:** Click here if your network uses DHCP or BOOTP.

**Enable Interface:** Click here to enable the network interface.

**IP Address:** Uneditable (grayed-out) if DHCP is selected. The IP (Internet Protocol) address assigned to the appliance. Entered in a dotted-decimal format (for example, *10.10.10.10*).

**Network Mask:** Uneditable (grayed-out) if DHCP is selected. If needed, type a dotted-decimal subnet mask number. The network mask distinguishes your local network from a larger network. For example, *255.255.0.0*.

**Broadcast Address:** Uneditable (grayed-out) if DHCP is

selected. If needed, type a dotted-decimal network mask number. Specify how broadcast requests are sent from your appliance to the network. Typically the setting is *255.255.255.255* or *0.0.0.0*. Ask your system administrator.

**Speed:** Select the bandwidth speed of your network Ethernet connection. This setting will only affect the onboard Realtek Ethernet on your appliance's motherboard.

**Edit Default Values:** Click here if you would like to manually edit the Client Name, Default Domain, Primary and Secondary DNS Server, and Default Gateway settings.

**Note:** These values may be overridden by DHCP values.

**Client Name:** If needed, enter a client name. This name is used by UNIX/Linux systems as a hostname and by ICA and RDP servers as a Client Name.

**Default Domain:** If needed, type the domain name used by your local network for DNS (Domain Name Service). For example: *neoware.com* Ask your system administrator.

**Primary DNS Server:** If needed, type the IP address of a DNS server on your network. For Netscape Navigator to work properly, you should enter an address in this field.

**Secondary DNS Server:** If desired, type the IP address of a second DNS server available to your appliance on the network.

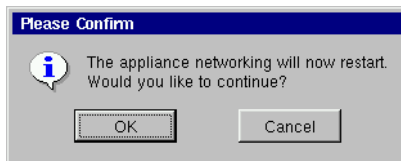
**Default Gateway:** If your appliance and the DNS servers, or other routinely accessed servers, are on different networks, type the IP address of the router or gateway computer that connects them.

Once you make changes to your Network Settings, click OK and a confirmation dialog will appear. Click OK to restart the appliance

#### **FYI**

The Domain Name Service (DNS) is a server-based program that translates server names into IP addresses.

networking and apply the changes or Cancel to return to the Network Settings dialog.



## CHAPTER 3

## *ezConnect - The Neoware Connection Manager*

*This chapter describes how to use ezConnect to create and use connections on your Neoware appliance to connect to servers.*

---

### Managing Connections

---

#### ezConnect

ezConnect is a connection manager that appears whenever your Neoware appliance starts. ezConnect lets you configure and manage connections to servers.



## Creating connections



- 1 If ezConnect isn't on screen, simultaneously press CTRL + ALT + END.
- 2 Click the Add button or select Connection | Add.
- 3 In the Add Connection dialog select the type of connection you would like to create from the drop-down menu and then click OK.

The Add New Connection wizard will start, prompting you to enter the configuration settings for the type of connection you chose to create, with a series of dialogs. For more information concerning setting up and managing the different types of connections, please see the chapters describing them.

## Editing Connections



- 1 If ezConnect isn't on screen, simultaneously press CTRL + ALT + END.
- 2 Select the connection from the connection list that you would like to edit.
- 3 Click the Edit button or select Connection | Edit.
- 4 In the Edit Connection dialog select the tab that contains the configuration settings you would like to edit and make the appropriate changes. When finished, click OK.

When editing a connection the user is presented with a tabbed dialog that corresponds to the series of dialogs from the Add New Connection wizard. For a description of these dialogs see the Chapter that corresponds to the type of connection you would like to edit.

## Deleting Connections



- 1 If ezConnect isn't on screen, simultaneously press CTRL + ALT + END.
- 2 Select the connection from the connection list that you would like to delete.
- 3 Click the Delete button or select Connection | Delete.
- 4 When the delete confirmation message appears, click OK to



**delete the connection or click Cancel.**

## **Copying Connections**



- 1 **If ezConnect isn't on screen, simultaneously press CTRL + ALT + END.**
- 2 **Select the connection from the connection list that you would like to copy.**
- 3 **Click the Copy button or select Connection | Copy.**

When the user copies a connection a new connection appears with the title of "Copy of (connection copied)."

## **Using Connections**

---

### **Establishing a Connection**



- 1 **If ezConnect isn't on screen, simultaneously press CTRL + ALT + END.**
- 2 **Select the connection from the connection list that you would like to run.**
- 3 **Click the Connect button, or select Connection | Connect.**

**Note:** Other ways of starting a connection include double-clicking on the connection name, right-clicking on a connection name and clicking Connect in the window that appears, as well as selecting a connection and pressing the Enter key.

Your connection will start.

### **Ending a Connection**



- 1 **If ezConnect isn't on screen, simultaneously press CTRL + ALT + END.**
- 2 **Select the connection from the connection list that you would like to end.**
- 3 **Click the End button or select Connection | End.**

**Note:** If you disconnect or logout from within a session, then you will return to the ezConnect screen. To learn how this is done

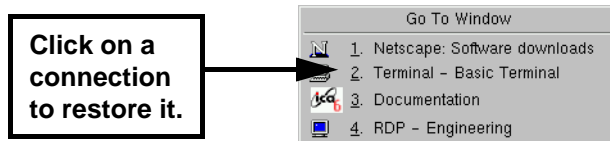
please consult the documentation concerning that connection.

Your connection will end.

## Switching between Connections

Once you have multiple connections started you can switch between them by:

- **Typing the key sequence CTRL + ALT + UP or DOWN arrow**
- **Connecting to any active connection from within the ezConnect screen.**
- **Accessing the Go To Window by clicking on the NeoLinux desktop background. Once the Go To Window appears click the active connection that you would like to use.**



## Session Management

A user can disconnect or close all of the sessions that are active on their appliance with a selection from the connections menu bar item.

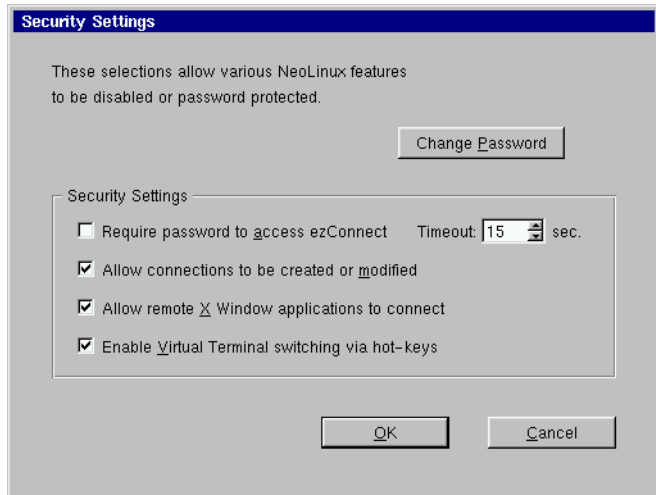
- 1 If ezConnect isn't on screen, simultaneously press CTRL + ALT + END.**
- 2 Select Connection in the menu bar and then highlight Session by placing your mouse over it. This will cause a drill down menu to appear containing the following options:**
  - **Close All Connections** - This logs the user out of any active connection running on their appliance
  - **Restart** - This option disconnects the user from any active session (leaving them running on the server) and restarts the appliance.
- 3 Select either Close All Connection or Restart.**

## Appliance Properties

---

### Security

- 1 If ezConnect isn't on screen, simultaneously press **CTRL + ALT + END**.
- 2 Select **Settings | Appliance properties | Security**.  
The Security Settings dialog will open.



This dialog allows the system administrator to selectively set specific security options in order to limit a user's ability to make appliance setting changes. These security options include:

- **Set/Change Password (button)**

Click here to set or change the configuration password for the appliance.



The image shows a dialog box titled "Change Appliance Password". It contains three text input fields: "Current Password:", "New Password:", and "Retype New Password:". At the bottom of the dialog box, there are two buttons: "Ok" and "Cancel".

- **Require password to access ezConnect** - Select this checkbox if you would like to require that the user type in the password in order to access the ezConnect connection manager. This option is applicable for appliance configurations where the end user is only to have access to a specific autostarted connection. One example of a specific configuration would be an appliance running a Netscape connection in Kiosk mode, set to autostart on appliance startup.

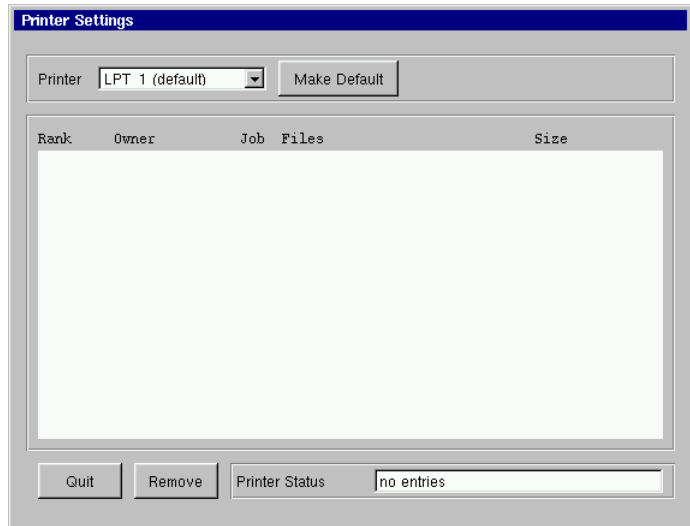
**Timeout** - Set the amount of time to allow the user to enter the password to access ezConnect.

- **Allow connections to be created or modified** - Select this checkbox to allow the user to create and configure connections in ezConnect on the appliance.
- **Allow remote X Window application to connect** - Select this checkbox to allow X window applications running on a remote server to access your appliance. This does not affect X window connections.  
**Note:** Selecting this feature can create a security risk by allowing people to access an appliance remotely.
- **Enable Virtual Terminal switching via hotkeys** - Select this checkbox to allow the user to switch between Virtual Terminal connections using hotkeys. This can be accomplished by typing the key combination ALT + SYSRQ and then typing a

Function key. For example, type ALT + SYSRQ and then type F3 in order to access a diagnostic console. To return from a Virtual Terminal type ALT+F4.

## Printers

- 1 **If ezConnect isn't on screen, simultaneously press CTRL + ALT + END.**
- 2 **Select Settings | Appliance properties | Printers.**  
The Printer Settings dialog will open.

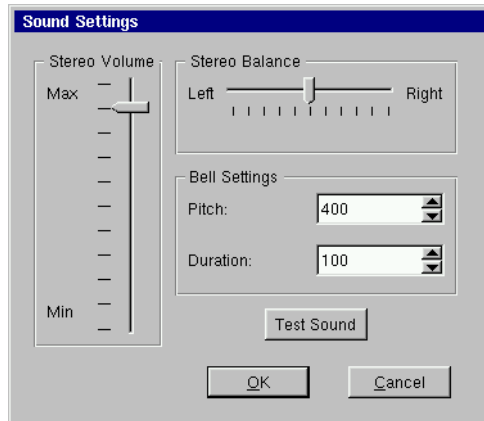


This dialog is a graphical print spool manager that allows you to manage your local print jobs. It allows you to choose a default printer, and remove print jobs that are waiting in the queue. The user can also determine the status of the printer they are using.

**Note:** The Printer Settings dialog only handles print jobs that originate on your local appliance(i.e. - printing from a terminal emulation connection or from a Netscape connection). It will not handle print jobs that come from external connections such as the ICA client.

## Sound

- 1 If ezConnect isn't on screen, simultaneously press CTRL + ALT + END.
- 2 Select Settings | Appliance properties | Sound.  
The Sound Settings dialog will appear on your screen.

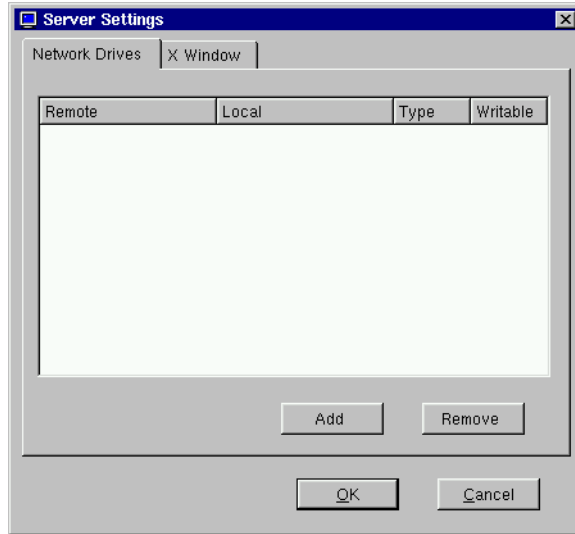


- 3 Use the Stereo Volume slider to raise or lower the line out or appliance speaker (if applicable) volume.
- 4 Use the Stereo Balance slider to adjust the left/right mix of your line out sound.  
**Note: This will not affect the sound output of an appliance's internal speaker (if applicable).**
- 5 Use the Bell Settings to adjust the pitch and duration of the system bell. Click the Test Sound button to preview your settings.
- 6 Click OK to accept the changes.

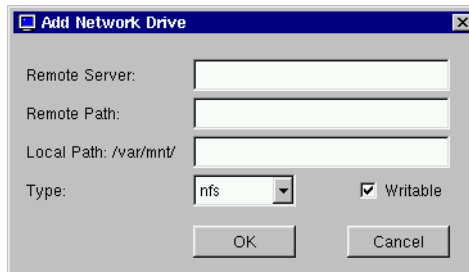
## Servers

- 1 If ezConnect isn't on screen, simultaneously press CTRL + ALT + END.
- 2 Select Settings | Appliance properties | Servers.  
The Server Settings dialog will appear on your screen. The network Drives tab is used to map a network drive for NeoLinux applications to use. The X Window tab allows you to specify

XDM and X Font servers that do not respond to XDMCP broadcasts so that they are available when creating an X Window connection. To map a network drive, continue with step 3. To specify XDM and X font servers, continue with step 9.

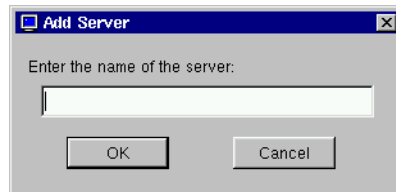


- 3 Select the Network Drive tab and click the Add button to map a network drive for NeoLinux applications to use. The Add Network Drive Dialog will appear.**



- 4 In the Remote Server field specify the host name or IP address of the server that contains the drive you would like to map.**
- 5 In the Remote Path field specify the full path of the directory which you would like to map.**

- 6 **In the Local Path field specify the name of the local directory to which you would like to map the network drive.**  
**Note:** The directory you specify can be found in the path /var/mnt/.
- 7 **Click the Writable checkbox if you would like NeoLinux Applications to be able to write to the mapped network drive.**
- 8 **Click OK to map the specified network drive.**
- 9 **Select the X Window tab and click the Add button to specify XDM and X Font servers that do not respond to XDMCP broadcasts so that they are available when creating an X Window connection. The Add Server dialog will appear.**



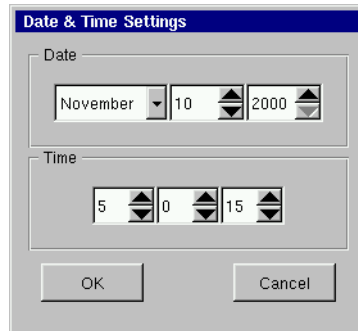
- 10 **In the Add server Enter the host name or IP address of the server that you would like to add.**
- 11 **Click OK to add the server.**

## **Setting the Date and Time**

- 1 **If ezConnect isn't on screen, simultaneously press CTRL + ALT + END.**
- 2 **Select Settings | Appliance properties | Time & Date.**



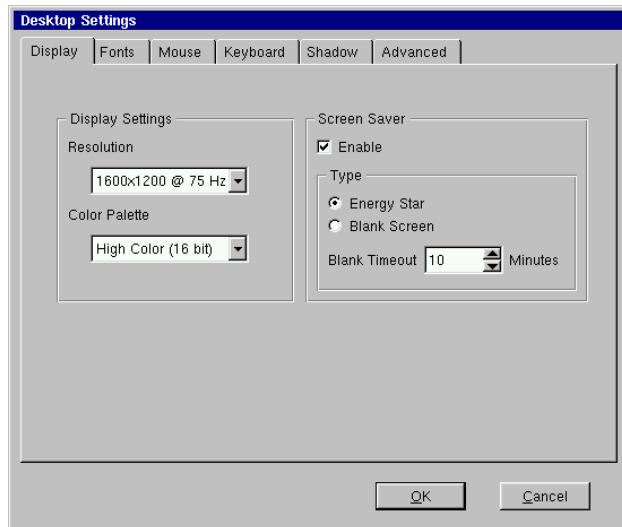
The Date & Time Settings dialog will appear on your screen.



- 3 Adjust the month, day, and year if incorrect.**
- 4 Adjust the time (using the 24-hour clock) for your location.**
- 5 Click OK to accept the changes.**

## Desktop Settings

- 1 If ezConnect isn't on screen, simultaneously press CTRL + ALT + END.**
- 2 Select Settings | Appliance properties | Desktop.**  
The Desktop Settings tabbed dialog will appear on your screen.



**3 Select the tab for the Desktop settings you would like to change and adjust the appropriate parameters.**

- **Display** - Adjust your display resolution and color palette. Additionally, you can enable a screen saver and determine the type and timeout.
- **Fonts** - Control font servers and path settings for the fonts on your appliance.
- **Mouse** - Specify and test your input device settings.
- **Keyboard** - Specify and test the Repeat Rate and Delay for your keyboard. You can also specify the Keyboard Locale and whether you would like to enable NumLock at startup.
- **Shadow** - Specify the settings that allow an Administrator to shadow (remotely view and interact with) the appliance. The settings include checkboxes to allow ezRemote Manager or other VNC clients to shadow the appliance. If using a VNC client (not ezRemote Manager) to shadow, you can specify a password that is required when the client attempts to shadow. Additionally, you can specify Query Settings which will prompt the user to approve the shadowing of their appliance. The appliance can also be set to allow the shadowing if a user does not respond to the query via the Query Timeout. Finally, you can set the shadow Connection Priority to disconnect a shadowing connection if a second shadowing connection is established, automatically share connections allowing multiple shadowing connections, or to refuse concurrent connections which will disallow any further shadowing connections if one is already established.
- **Advanced** - Choose whether you would like the Taskbar of the NeoLinux desktop to Auto hide and/or appear on the ezConnect - Neoware Connection Manager screen. You can also specify whether you would like the desktop to appear on X display :1 instead of X display :0.

**Messages and Console**

The System Messages is a diagnostic log of system error messages and other information. The Console Window is used by administrators to view system directories and files. To open them, click Set-

tings | Appliance properties | Messages or Console from the ezConnect menu bar.

## Factory Reset

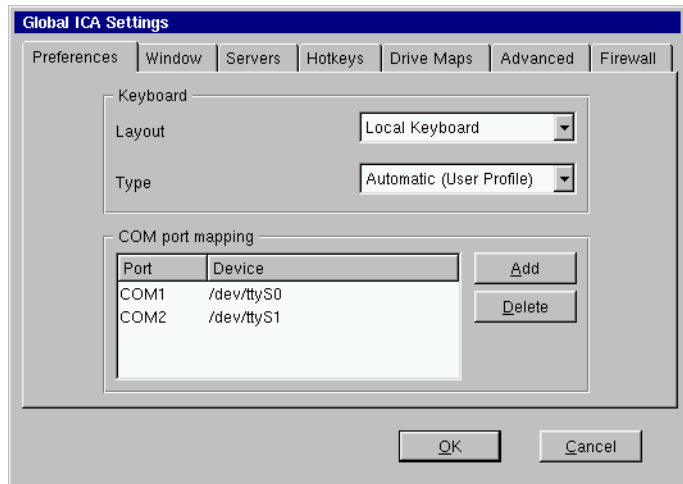
Selecting this option from the appliance properties menu will restore your appliance to its factory default state.

## Connection Properties

---

### Global ICA Settings

When a user clicks Settings | Connection properties | Global ICA Settings, a tabbed dialog appears allowing the user to customize settings that apply to all ICA connections defined on their appliance.



These settings include:

- **Preferences** - This tab includes fields for setting the Keyboard layout and type, as well as port and device settings.

**Note:** In order for your keyboard to work properly during an ICA session, the setting for the Keyboard Layout must either be set to "Local Keyboard" or it must match the Keyboard Locale setting in the Neolinux General settings dialog (see "Keyboard locale:" on page 24).

- **Window** - This tab allows the user to set the default number of colors and screen size of all ICA connections.
- **Server** - This tab allows the user to define a list of primary citrix browser servers that can be accessed to determine the list of available ICA connections (desktops and/or published applications).
- **Hotkeys** - This tab allows the user to set standard hotkey combinations.
- **Drive Mapping** - This tab will allow the user to specify appliance mounted directories or drives that they would like to access within their ICA sessions.
- **Advanced** - This tab allows the user to set specific ICA WFClient and Thinwire key item value registry entries.  
**Note:** Modifications to these registry entries can cause the ICA client to not run.
- **Firewall** - This tab allows the user to configure the ICA client to connect to a Citrix server through a firewall.

## CHAPTER 4 *ICA Connections*

*This chapter describes how to create and edit the configuration of ICA connections.*

---

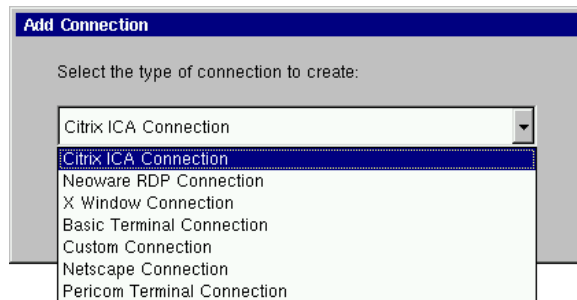
### Configuring ICA Connections

---

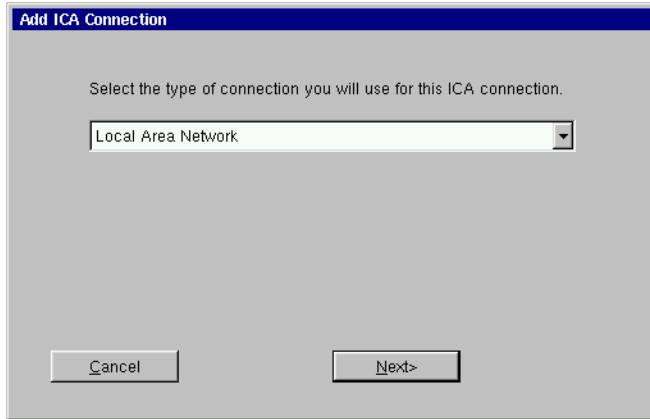
ICA is a network protocol used by Windows based servers running Citrix MetaFrame, WinFrame, or CDS. After you have clicked the add button in ezConnect, follow these steps to properly setup your new ICA connection.

#### **Creating an ICA connection**

- 1 In the Add Connection dialog, select Citrix ICA Connection from the drop-down menu. When finished, click OK.**

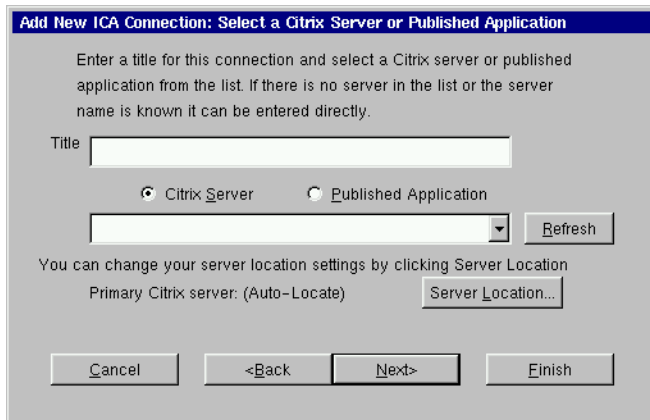


- 2 **Select the type of network connection from the drop-down menu.**



When finished, click Next.

- 3 **In the Select a Citrix Server or Published Application dialog type a title for your connection and select either a Citrix Server or Published Application. Then select the server or application you wish to connect to from the drop-down menu.**

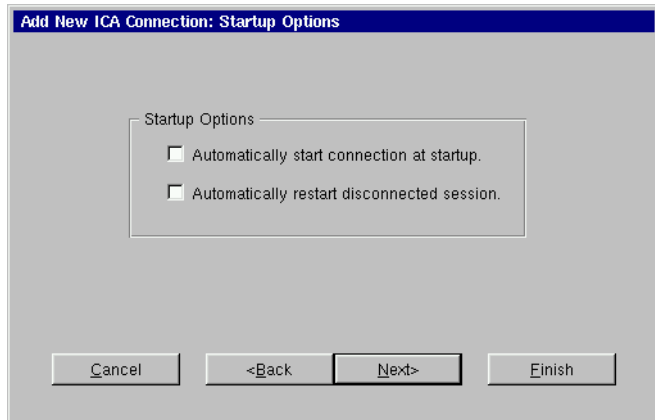


**If you need to set another primary Citrix server, click the Server Location button. For more information concerning the dialog that opens see the explanation of the server tab in the Global ICA Settings section of the ezConnect chapter.**

**When finished, click Next.**

**Note:** If there is no server or application listed in the drop-down menu, and you know the name, then it can be entered directly.

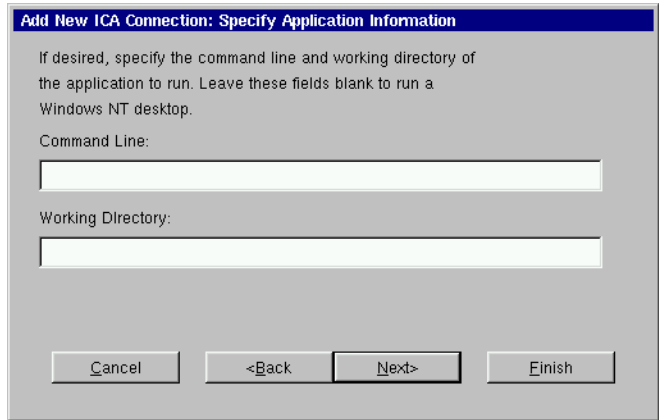
- 4 In the Startup Options dialog, you can select whether you would like this connection to automatically start at startup, and/or automatically restart the connection after it has become disconnected.**



**When finished, or if you do not wish to enable these options, click Next.**

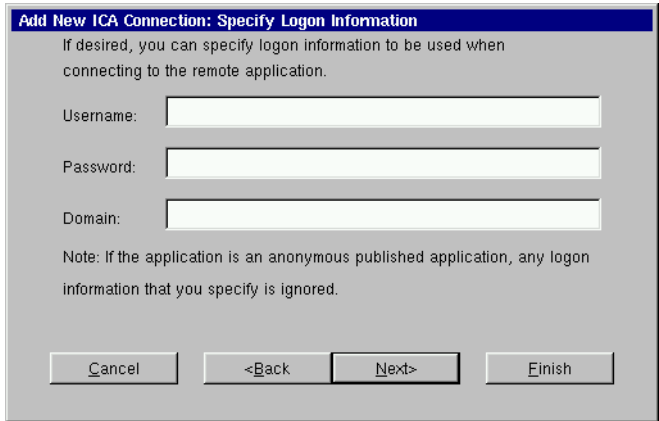
- 5 In the Specify Application Information dialog enter the command line and Working Directory of the application you wish to run. If you wish only to run a Windows NT or 2000 desk-**

**top, leave these fields blank.**



**When finished, click Next.**

**6 If you want, specify logon information, and then click Next.**

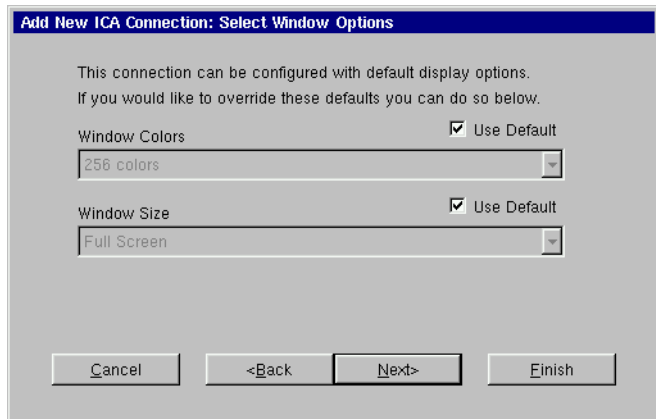


**Note:** If you don't type logon information now, it will be requested when the connection starts.

**7 In the Select Window Option dialog you can select specific Window Colors and Size options by deselecting the Use Default option and then choosing the setting from the drop-**

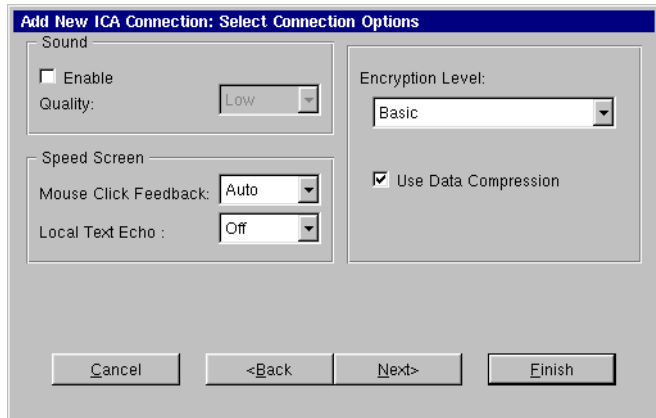


down menus.



When finished, or if you would like to use the default settings, click Next.

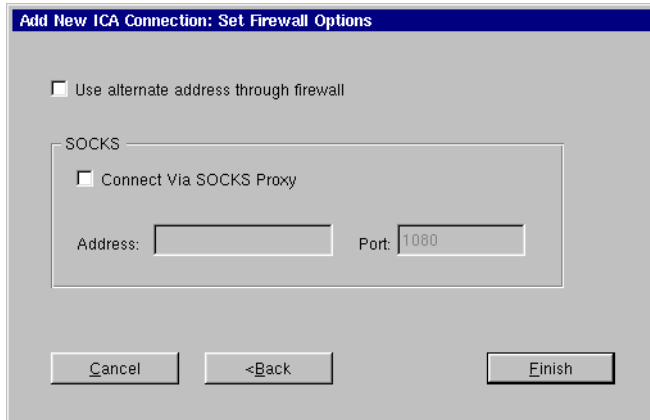
- 8** If needed, select sound settings, speed screen settings, encryption level, and whether you would like to use data compression in the Select Connection Options dialog.



When finished, or if you do not wish to enable these options, click Next.

- 9** Click in the checkbox if you would like to use an alternate address when connecting through firewalls. Click in the

**SOCKS checkbox if you would like to connect via a SOCKS proxy server. If so, specify the address and port for the proxy to use.**



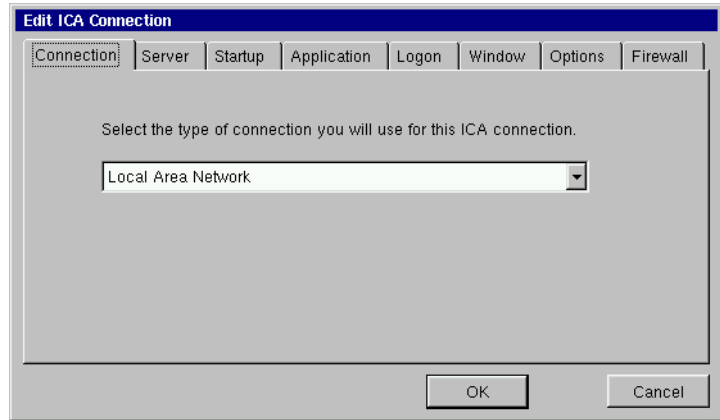
**When finished, or if you do not wish to enable these options, click Finish.**

The ICA connection will appear in the ezConnect connection list.

### **Editing an ICA connection**

When editing an ICA connection, the user is presented with a tabbed dialog, with each tab corresponding to the series of dialogs contained in the Add ICA Connection wizard. For specific information

concerning the detailed settings contained in these tabs, refer to the Creating an ICA connection instructions above.





## CHAPTER 5 *RDP Connections*

*This chapter describes how to create and edit the configuration of RDP connections.*

---

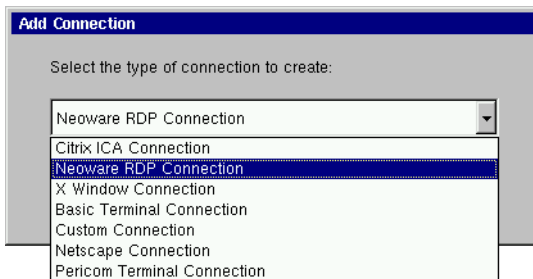
### Configuring RDP Connections

---

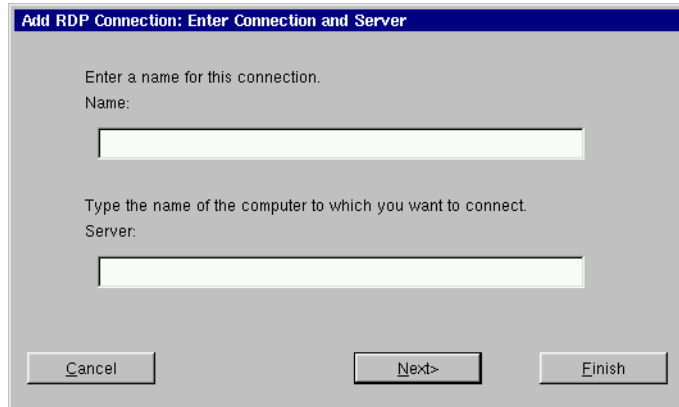
RDP connections utilize the open source RDP client in order to connect to Windows NT Terminal Server and Windows 2000 Servers using the RDP protocol. After you have clicked the add button in ezConnect, follow these steps to properly setup a new RDP connection.

#### Creating an RDP connection

- 1 In the Add Connection dialog, select Neoware RDP Connection from the drop-down menu. When finished, click OK.

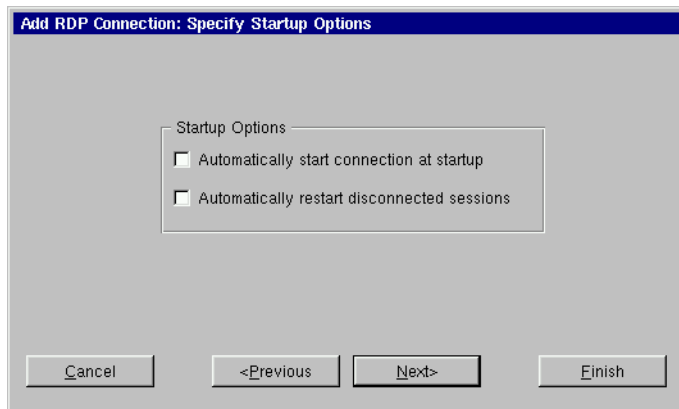


- 2 In the Enter Connection and Server dialog type a title for your connection in the name field and then type the name of the server you would like to connect to in the Server field. When finished click Next or Finish.**



**Note:** By clicking the Finish button at the end of this step or any subsequent step a connection will be created using the default settings for the remaining configuration options.

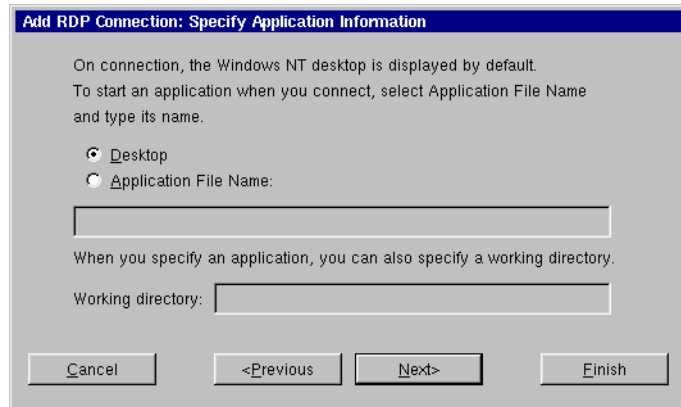
- 3 In the Startup Options dialog, you can select whether you would like this connection to automatically start at startup, and/or automatically restart the connection after it has become disconnected.**



**When finished, or if you do not wish to enable these options,**

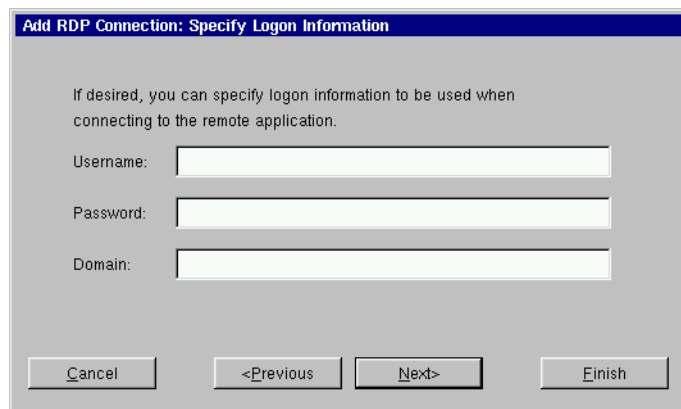
click **Next** or **Finish**.

- 4 In the Specify Application Information dialog, select whether you would like to display the desktop, or if you would like an application to start when the connection is established. Be sure to specify the Application File Name (command line) and a Working Directory for an application that you would like to start when the connection is established. When finished, click Next or Finish.**



The dialog box has a blue title bar with the text "Add RDP Connection: Specify Application Information". The main area contains the following text: "On connection, the Windows NT desktop is displayed by default. To start an application when you connect, select Application File Name and type its name." Below this text are two radio buttons: "Desktop" (which is selected) and "Application File Name:". Under the "Application File Name:" option is a text input field. Below the input field is the text: "When you specify an application, you can also specify a working directory." Below this text is a text input field labeled "Working directory:". At the bottom of the dialog are four buttons: "Cancel", "<Previous", "Next>", and "Finish".

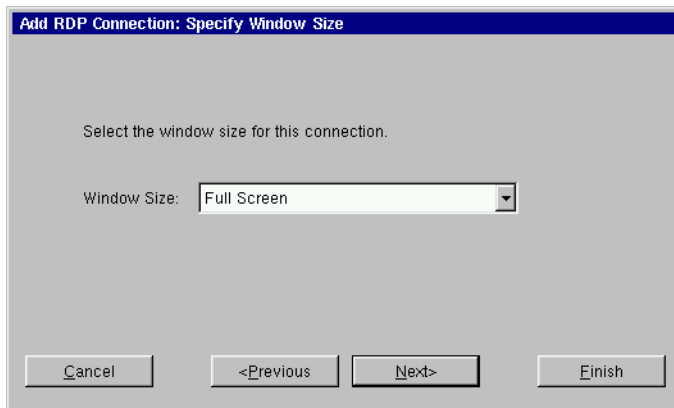
- 5 If you want, specify logon information. When finished, click Next or Finish.**



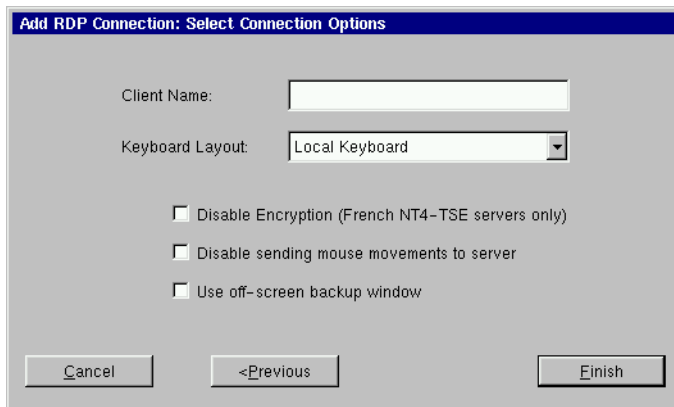
The dialog box has a blue title bar with the text "Add RDP Connection: Specify Logon Information". The main area contains the following text: "If desired, you can specify logon information to be used when connecting to the remote application." Below this text are three text input fields labeled "Username:", "Password:", and "Domain:". At the bottom of the dialog are four buttons: "Cancel", "<Previous", "Next>", and "Finish".

**Note:** If you don't type logon information now, it will be requested when the connection starts.

- 6 In the Specify Window Size dialog decide whether you would like the connection to be Full Screen or Windowed. If you would like your connection to be windowed then choose the size you would like your connection window to be. When finished, click Next or Finish.**



- 7 In the Select Connection Options dialog, specify the options you would like applied to the RDP connection you are creating.**



The following options can be applied to RDP connections

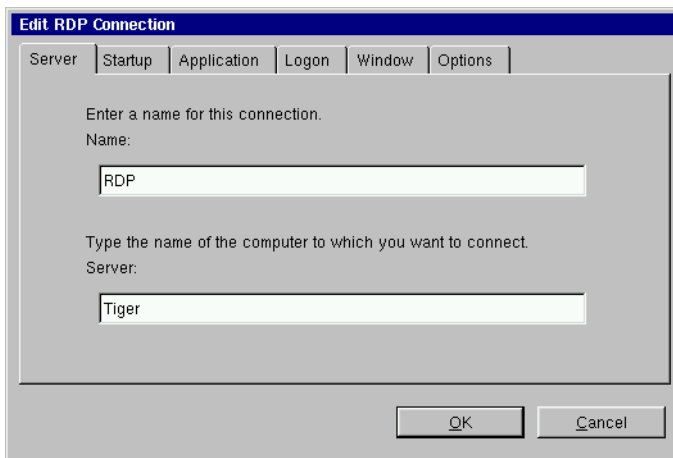


- **Client Name** - In this field you can specify the RDP client name.  
**Note:** If the Client Name is left blank then the RDP connection will use the Client Name in the General Settings dialog (see “Network Settings” on page 25).
- **Keyboard Layout** - Select the type of keyboard you are using.  
**Note:** The setting for the Keyboard Layout must either be set to "Local Keyboard" or it must match the Keyboard Locale setting in the Neolinux General settings dialog (see “Keyboard locale:” on page 24).
- **Disable Encryption** - Selecting this checkbox will disable encryption so that your appliance can connect to French Windows NT4 servers running Terminal Server Edition.
- **Disable sending mouse movements to server** - This option reduces the amount of network traffic and should be used for low bandwidth RDP connections.
- **Use off-screen backup window** - This improves the screen refresh.  
**Note:** This option uses system memory and can result in slight performance decrease.

## Editing an RDP connection

When editing an RDP connection, the user is presented with a tabbed dialog, with each tab corresponding to the series of dialogs contained in the Add RDP Connection wizard. For specific informa-

tion concerning the detailed settings contained in these tabs, refer to the Creating a RDP connection instructions above.



## CHAPTER 6

# Basic Terminal Connections

*This chapter describes how to create and edit Basic Terminal connections.*

---

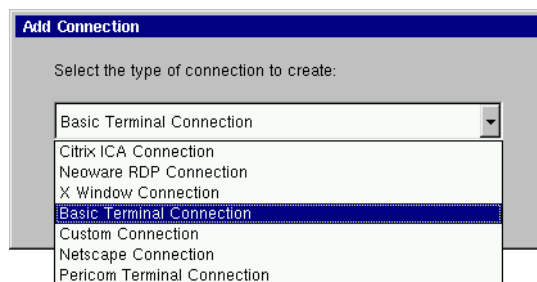
## Configuring Basic Terminal Connections

---

A Basic Terminal connection allows the user to connect to a UNIX, or Linux server, using a Telnet session. This differs from the more full featured Pericom terminal emulation which allows the user to select from a variety of different terminal emulations, print from terminal sessions, create macros, and run scripts in sessions. For more information on using Pericom terminal emulation server connections, see “Pericom Terminal Connections” on page 63. After you have clicked the add button in ezConnect, follow these steps to properly setup a new Basic Terminal connection.

### Creating a Basic Terminal connection

- 1 In the Add Connection dialog, select Basic Terminal Connection from the drop-down menu. When finished, click OK.



- 2 In the Specify Title and Server dialog, enter a title for your connection. Then enter the name or IP address and the port of a host to connect to. When finished, click Next or Finish.**

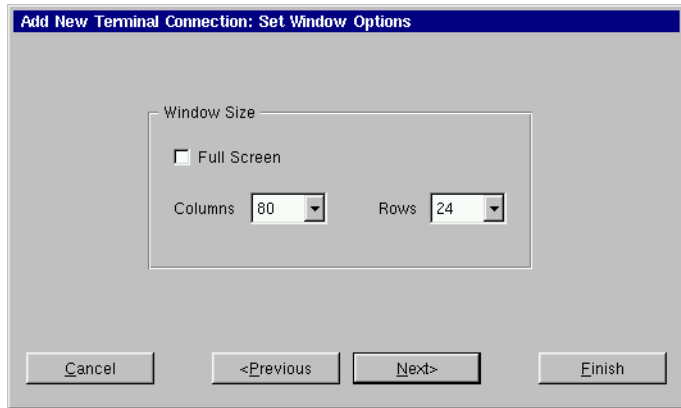
The dialog box has a title bar that reads "Add New Terminal Connection: Specify Title and Server". Below the title bar, there is a text prompt: "Enter a name for this terminal connection and enter the name or IP address and port of a host to connect to." Below this prompt is a form with three input fields: "Name" (a single-line text box), "Host" (a single-line text box), and "Port" (a single-line text box containing the number "23"). At the bottom of the dialog, there are three buttons: "Cancel", "Next>", and "Finish".

**Note:** By clicking the Finish button at the end of this step or any subsequent step a connection will be created using the default settings for the remaining configuration options.

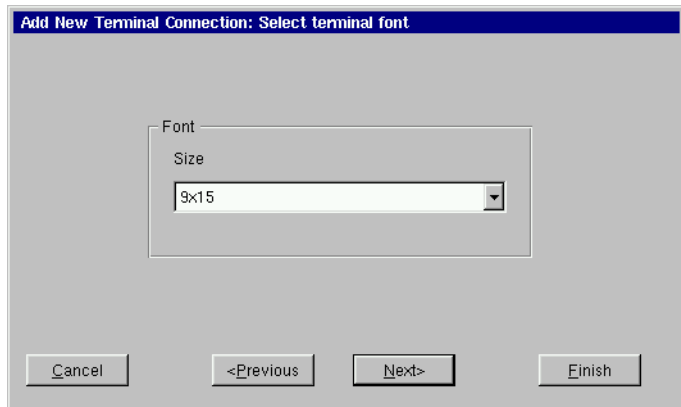
- 3 In the Startup Options dialog, you can select whether you would like this connection to automatically start at startup, and/or automatically restart the connection after it has become disconnected. When finished, or if you do not wish to enable these options, click Next or Finish.**

The dialog box has a title bar that reads "Add New Terminal Connection: Specify Startup Options". Below the title bar, there is a section titled "Startup Options" containing two checkboxes: "Automatically start connection at startup" and "Automatically restart disconnected sessions". Both checkboxes are currently unchecked. At the bottom of the dialog, there are four buttons: "Cancel", "<Previous", "Next>", and "Finish".

- 4 If you want, select a window size for your connection, and then click Next.**

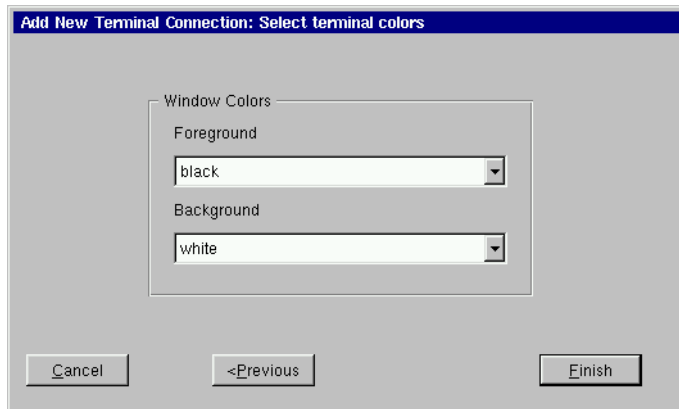


- 5 If you would like to specify which font size to use, select the font size you would like to use from the drop-down list. When finished, click Next.**



- 6 If you would like to specify the foreground and background colors for your connection, select the colors you would like to**

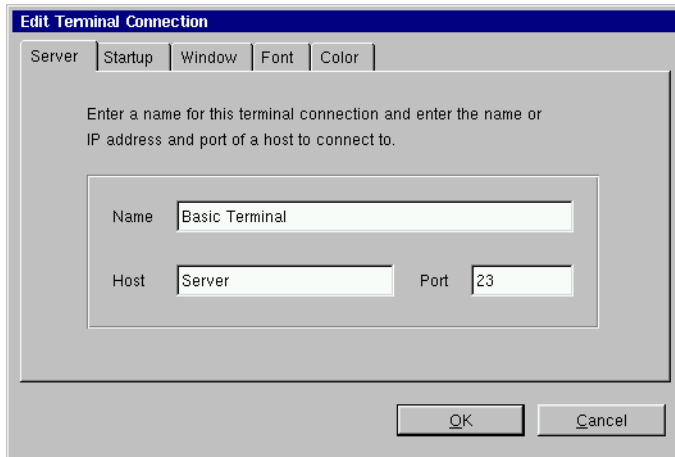
use from the drop-down lists. When finished, click Finish.



The Basic Terminal connection will appear in the ezConnect connection list.

### Editing a Basic Terminal connection

When editing a Basic Terminal connection, the user is presented with a tabbed dialog, with each tab corresponding to the series of dialogs contained in the Add Terminal Connection wizard. For specific information concerning the detailed settings contained in these tabs, refer to the Creating a Basic Terminal connection instructions above.



## CHAPTER 7

# *Netscape Connections*

*If your appliance has the optional Netscape software installed, then this chapter describes how to create and edit Netscape connections.*

---

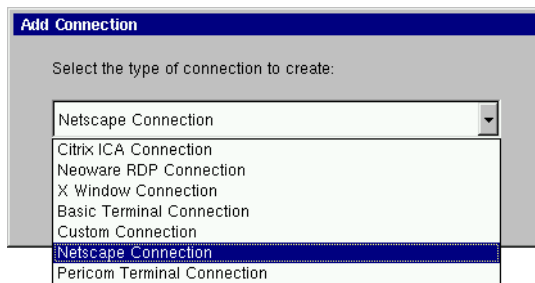
## Configuring Netscape Connections

---

A Netscape connection allows the user to establish a connection to the Internet or a local intranet site using the embedded Netscape client. After you have clicked the add button in ezConnect, follow these steps to properly setup a new Netscape connection.

### Creating a Netscape connection

- 1 In the Add Connection dialog, select Netscape Connection from the drop-down menu. When finished, click OK.



- 2 In the Enter Connection Name and Start Page dialog, enter a title for your connection in the Name field, and then specify the url (uniform resource locator) of the web page you would like to appear when you start the connection. When

**finished, click Next or Finish.**

The dialog box has a blue title bar with the text "Add Netscape Connection: Enter Connection Name and Start Page". The main area is light gray and contains the following text and fields:

- Text: "Enter the name of this Netscape connection."
- Text: "Name" followed by a text input field containing "Netscape".
- Text: "Enter the location of the web page that should be loaded when Netscape starts."
- Text: "Start page" followed by a text input field containing "http://www.neoware.com".
- Buttons: "Cancel", "Next>", and "Finish" are located at the bottom of the dialog.

**Note:** By clicking the Finish button at the end of this step or any subsequent step a connection will be created using default settings for the remaining options.

- 3 In the Select Netscape Mode dialog, choose whether you would like Netscape to run in either the "Standard Netscape" or "Kiosk Mode." When finished, click Next or Finish.**

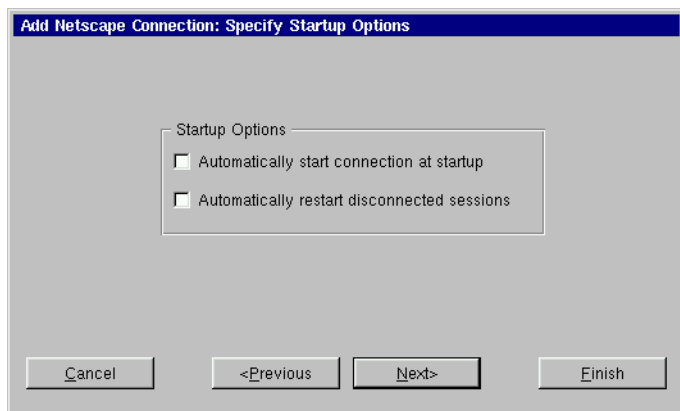
The dialog box has a blue title bar with the text "Add Netscape Connection: Select Netscape Mode". The main area is light gray and contains the following text and fields:

- Text: "Enter the mode in which Netscape should be run."
- Radio buttons: "Standard Netscape" (selected) and "Kiosk Mode".
- Text: "Click 'Standard Netscape' to run the familiar version of the browser. To disable certain features and provide a more secure environment desirable in web kiosks, click 'Kiosk Mode'."
- Buttons: "Cancel", "<Previous", "Next>", and "Finish" are located at the bottom of the dialog.



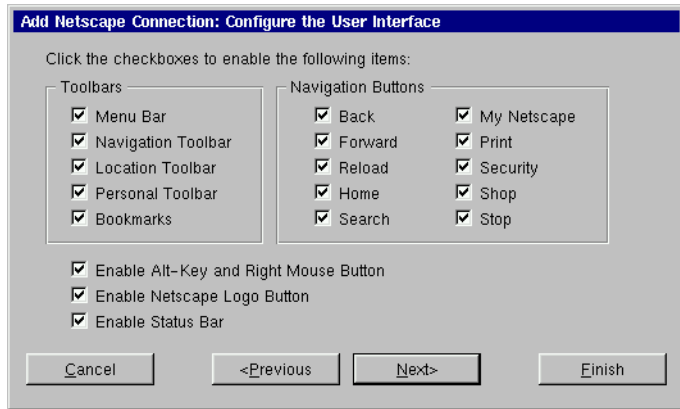
**Note:** The Netscape Kiosk mode runs the browser in a full-screen mode and allows the administrator to disable certain features of the Netscape Browser in order to provide the users of this connection with a more secure connection. This is accomplished in step 5 of the Add Netscape Connection Wizard.

- 4 In the Startup Options dialog, you can select whether you would like this connection to automatically start at startup, and/or automatically restart the connection after it has become disconnected. If you are creating a Netscape Kiosk connection, click Next. If you are creating a Standard Netscape connection, click Finish.**



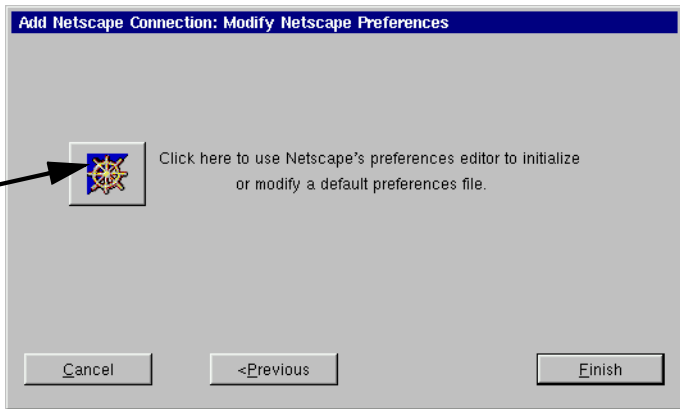
- 5 If you chose the Kiosk Mode in step 3, the Configure the User Interface dialog will appear. In the Configure the User Interface dialog, choose which features you would like enabled or disabled in the Netscape browser used for this connection. To enable a feature it must have a check in its corresponding checkbox. To disable a feature, the corresponding checkbox must be empty. Set the features to either enabled or disabled.**

When finished, click Next.



- 6 If you want, click on the icon in the Modify Netscape Preferences dialog in order to start the Netscape browser preferences editor.

If you have disabled the menu bar in step 5, clicking here opens the Netscape Preferences Editor which can only be accessed from the menu bar.



**FYI**  
The Netscape Preferences Editor allows changes to be made to the software appearance, font, color, home page, history, programming language support, cookies, cache, and proxy settings.

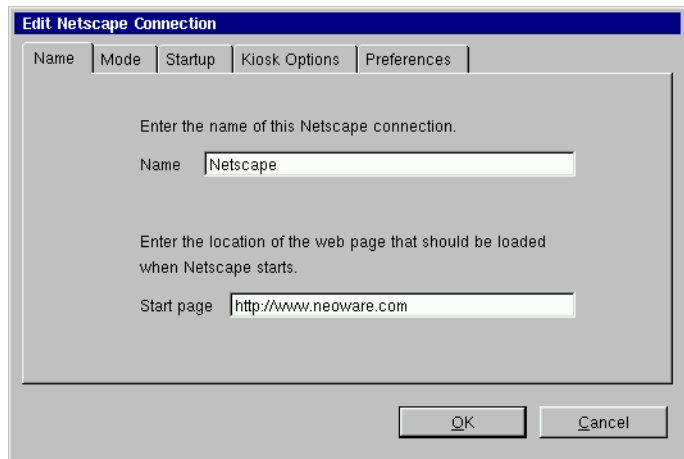
Once you have finished modifying the Netscape Preferences, click OK and then select Exit from the File menu in the Netscape browser. Then select Finish in the Modify Netscape Preferences dialog to complete the Netscape connection.

**Note:** For more information on editing the Netscape browser preferences, refer to Netscape's documentation.

The Netscape connection will appear in the ezConnect connection list.

### Editing a Netscape connection

When editing a Netscape connection, the user is presented with a tabbed dialog, with each tab corresponding to the series of dialogs contained in the Add Netscape Connection wizard. For specific information concerning the detailed settings contained in these tabs, refer to the Creating a Netscape connection instructions above.



### Printing Netscape pages

The local Netscape Navigator browser prints to PostScript printers only.

Make sure the printer connected to your appliance is turned on and not currently printing other files.

- **To print Netscape pages**, click File | Print from the Netscape menus, and then click Print.

**Note:** If you are using any printer other than your default, you must first specify that printer in the /writable/sys/printcap file. You can then specify that printer by typing lpr -P (printername) in the Print Command field, located in the Netscape Print Dialog.



## CHAPTER 8

# *X Window Connections*

*If your appliance contains this software option, then this chapter describes how to create and edit X Window connections.*

---

## Configuring X Window Connections

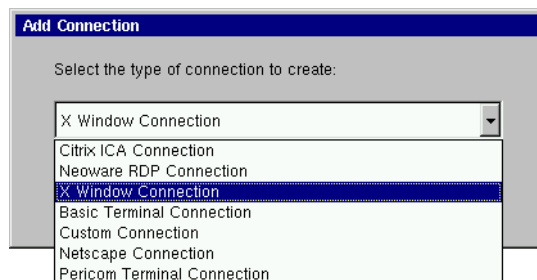
---

An X Window connection allows the user to connect to XDM servers for remote X desktops. After you have clicked the add button in ezConnect, follow these steps to properly setup a new X Window connection.

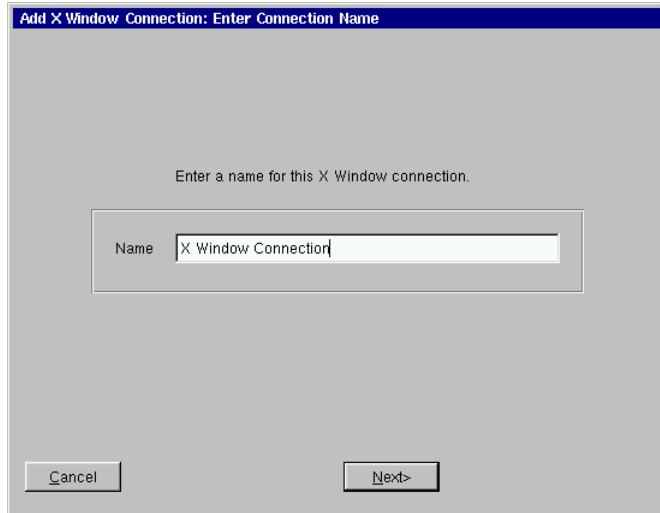
**Note:** Certain dialogs in the Add X Window Connection wizard contain "Use Main Desktop Settings" checkboxes. By enabling this option, the settings for which the checkbox applies will equal the corresponding Appliance properties Desktop setting (see "Desktop Settings" on page 25).

### Creating an X Window Connection

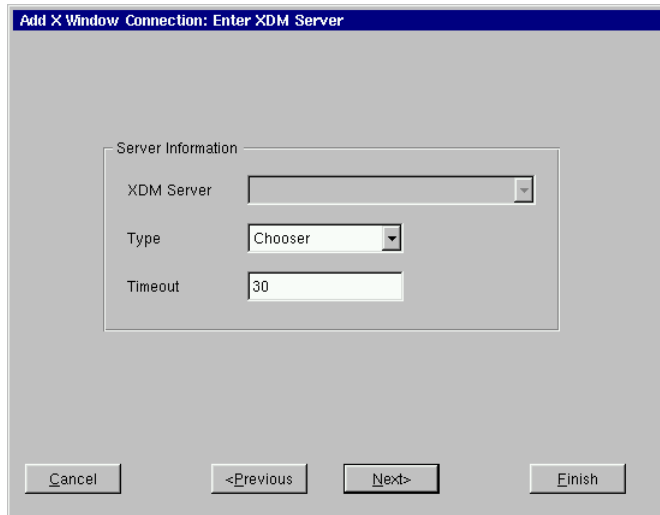
- 1 In the Add Connection dialog, select X Window Connection from the drop-down menu. When finished, click OK.



- 2 Enter a name for your X Window connection. When finished, click Next.**



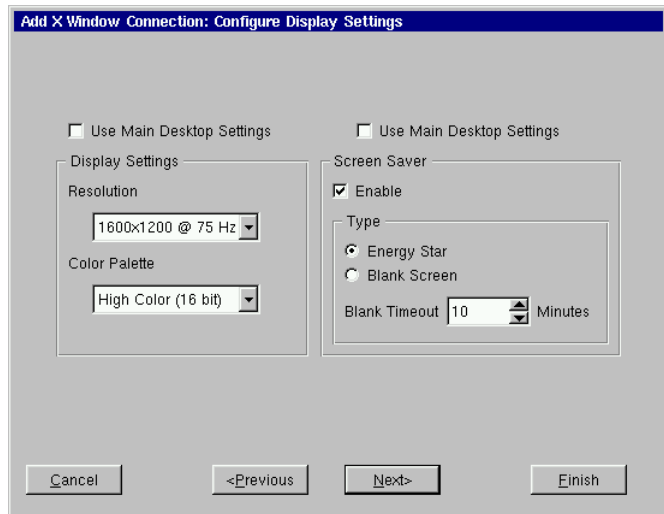
- 3 In the Enter XDM Server dialog, enter the name of the XDM server you wish to connect to, and then specify the type of X connection you are creating. When finished, click Next.**



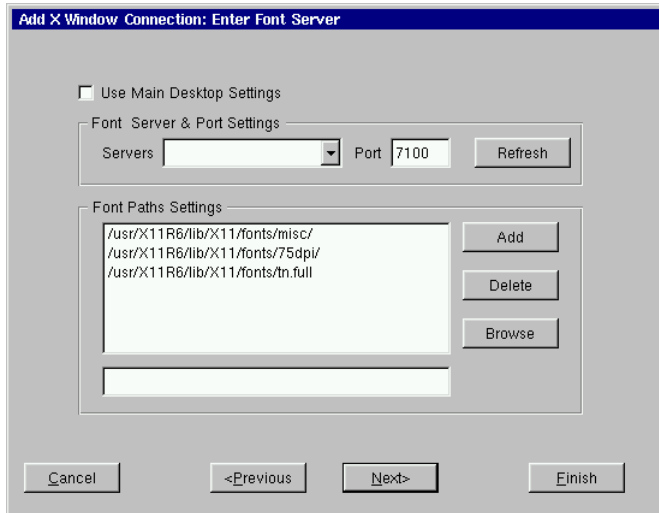
**Note:** There are four types of XDM sessions: direct, chooser,

indirect, and broadcast. Direct requires you to specify the server you will connect to using this connection. Chooser presents a list of possible servers to the user at connection time. This list consists of a combination of servers located by a broadcast and servers specified by an administrator in the Server Settings dialog (). Indirect works like direct but allows the specified server to redirect you to another server. Broadcast will connect to the first server that responds to a location broadcast.

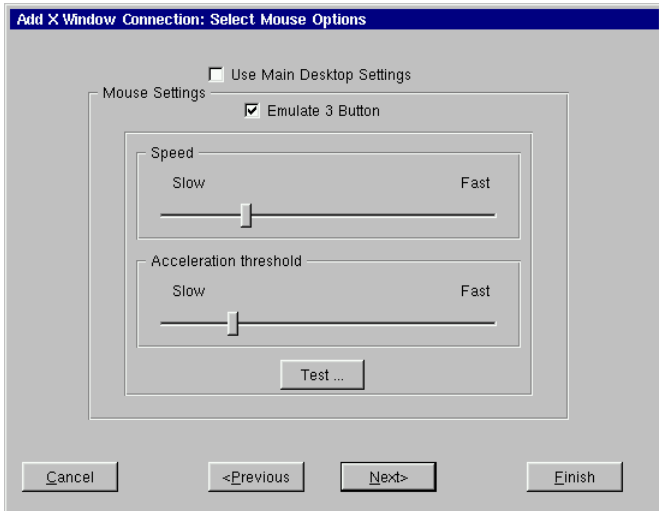
- 4 In the Configure Display Settings dialog, adjust your display resolution and color palette. Additionally, you can enable a screen saver and determine the type and timeout. When finished, click Next.**



- 5 Enter the font server and the font server port you wish to use. When finished, click Next.**



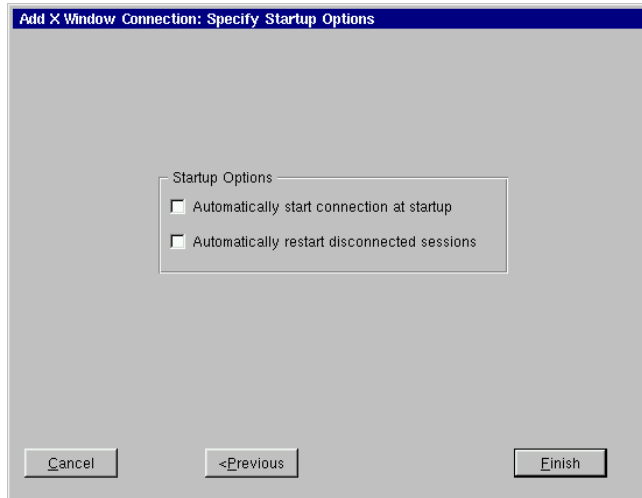
- 6 In the Select Mouse Options dialog specify and test your input device settings. When finished, click Next.**



- 7 In the Startup Options dialog, you can select whether you would like this connection to automatically start at startup,**



**and/or automatically restart the connection after it has become disconnected. When finished, or if you do not wish to enable these options, click Finish.**

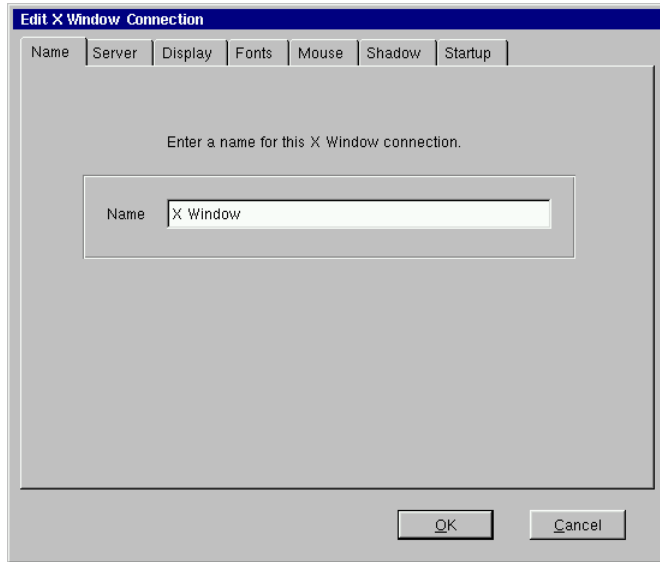


The X Window connection will appear in the ezConnect connection list.

### **Editing an X Window connection**

When editing an X Window connection, the user is presented with a tabbed dialog, with each tab corresponding to the series of dialogs contained in the Add X Window connection wizard. For specific

information concerning the detailed settings contained in these tabs, refer to the Creating an X Window connection instructions above.



## CHAPTER 9

# Custom Connections

*If your appliance has this software option, then this chapter describes how to create a Custom connection.*

---

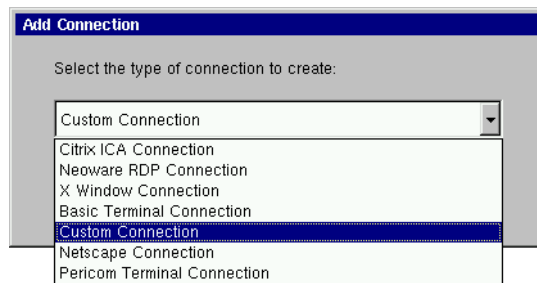
## Configuring Custom Connections

---

A Custom connection allows the user to define an executable command that is run as if from a command line in order to start a Connection. After you have clicked the add button in ezConnect, follow these steps to properly setup a Custom connection.

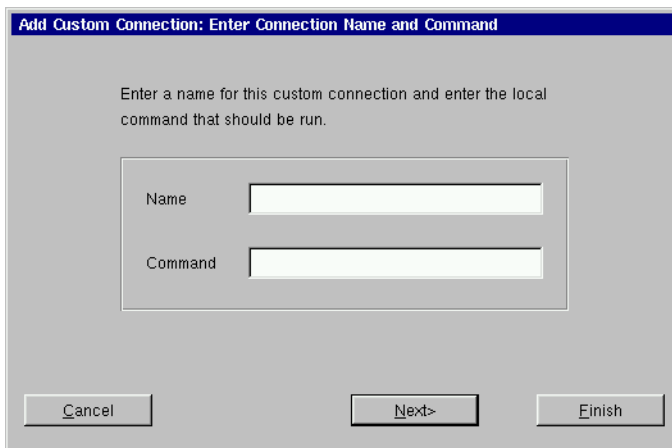
### Creating a Custom connection

- 1 In the Add Connection dialog, select Custom Connection from the drop-down menu. When finished, click OK.



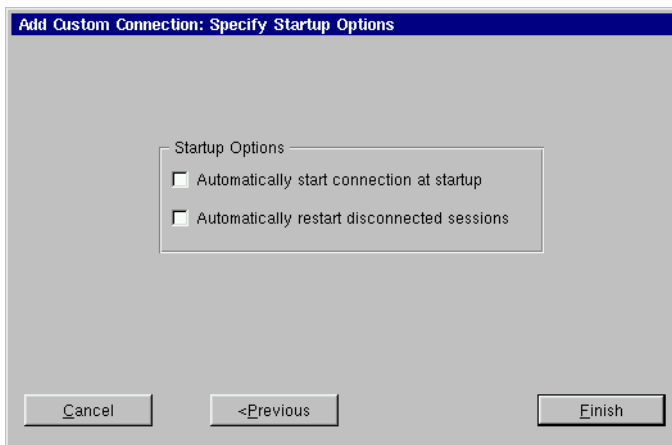
- 2 In the Specify Name and Command, enter a name for your connection, and the executable command you would like to use to start your custom connection. When finished, click

**Next or Finish.**



**Note:** By clicking the Finish button at the end of this step or any subsequent step a connection will be created using default settings for the remaining options.

- 3 In the Startup Options dialog, you can select whether you would like this connection to automatically start at startup, and/or automatically restart the connection after it has become disconnected. When finished, or if you do not wish to enable these options, click Finish.**



The Custom connection will appear in the ezConnect connection list.

**Editing a Custom connection**

When editing a Custom connection, the user is presented with a tabbed dialog, with each tab corresponding to the series of dialogs contained in the Add Custom Connection wizard. For specific information concerning the detailed settings contained in these tabs, refer to the Creating a Custom connection instructions above.



# *Pericom Terminal Connections*

*If your appliance has the optional Pericom software, then this chapter describes how to create and edit Pericom Terminal connections.*

---

## Configuring Pericom Terminal Connections

---

A Pericom Terminal connection allows the user to access mainframes or minicomputers using teemX. The Pericom terminal connection differs from the Basic terminal connection by offering the user advanced functionality features such as printing, macro, scripting, and teemX, which is a suite of more than 30 alphanumeric and graphic terminal emulations. These emulations include:

### **Alphanumeric Emulations**

- ADDS A2.
- ANSI BBS.
- AT&T 5510.
- Data General DG410.
- DEC VT52, VT100, VT101, VT102, VT125, VT131, VT132, VT220, VT240, VT320, VT340, VT400-7, VT400-8, VT420.
- DOC 18.
- Hazeltine 1500.
- Hewlett Packard 2392A, 2622A, 700/92.
- IBM 3151, 3270 2, 3, 4, 5 NVT Mode, 3270E, and 5250.
- ICL 7561.
- McDonnell Douglas Prism-8, -9.

- Microcolor 2200.
- Prime PT250.
- SCO Console.
- Siemens 97801.
- Stratus V102.
- Tandem 6526, 6530.
- Televideo 910, 925.
- Viewdata 40, 80, Split.
- WYSE 50, 50+, 60.

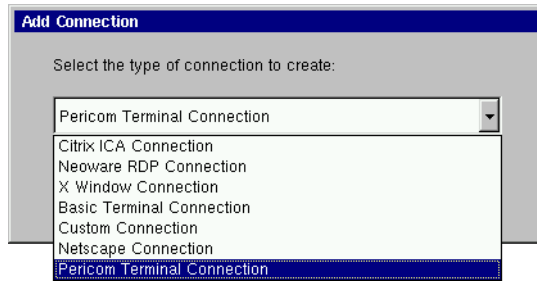
### **Graphic Emulations**

- DEC VT340 (ReGIS).
- IBM 3270.
- Retrographics VT640.
- Tektronix 4010, 4014.
- Westward 2119.

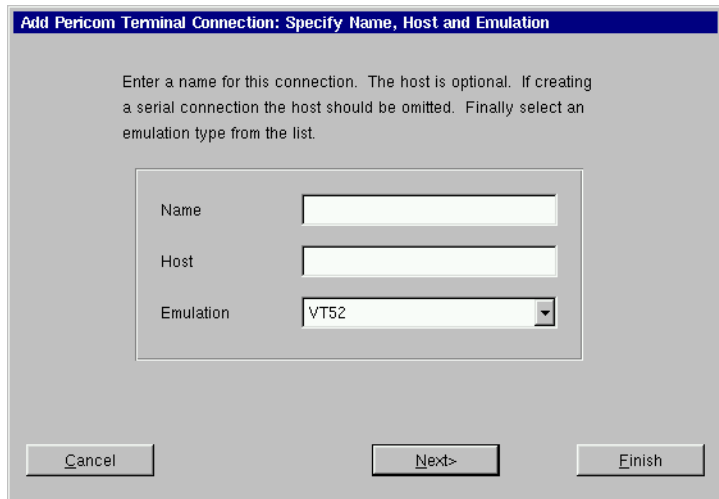
After you have clicked the add button in ezConnect, follow these steps to properly setup a Pericom Terminal connection.

### Creating a Pericom Terminal connection

- 1 In the Add Connection dialog, select Pericom Terminal Connection from the drop-down menu. When finished, click OK.



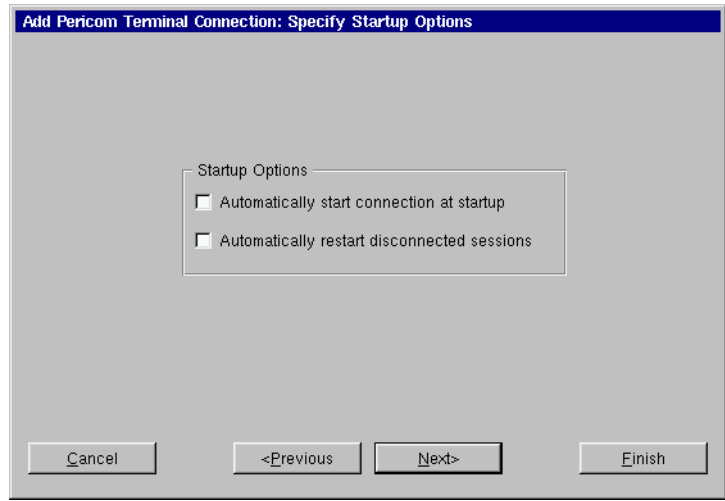
- 2 In the Specify Name, Host, and Emulation dialog, enter a name for your connection, a name or IP address of a host to connect to (optional), and the emulation you would like to use. When finished, click Next or Finish.



**Note:** By clicking the Finish button at the end of this step or any subsequent step a connection will be created using default settings for the remaining options.

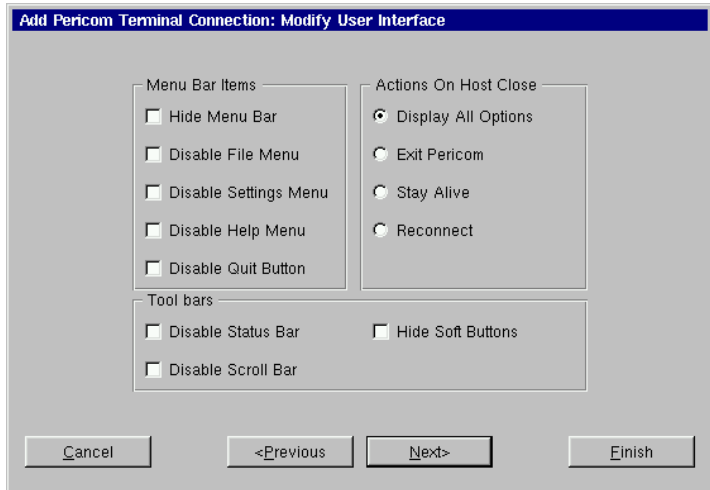


- 3 In the Startup Options dialog, you can select whether you would like this connection to automatically start at startup, and/or automatically restart the connection after it has become disconnected. When finished, or if you do not wish to enable these options, click Next or Finish.**



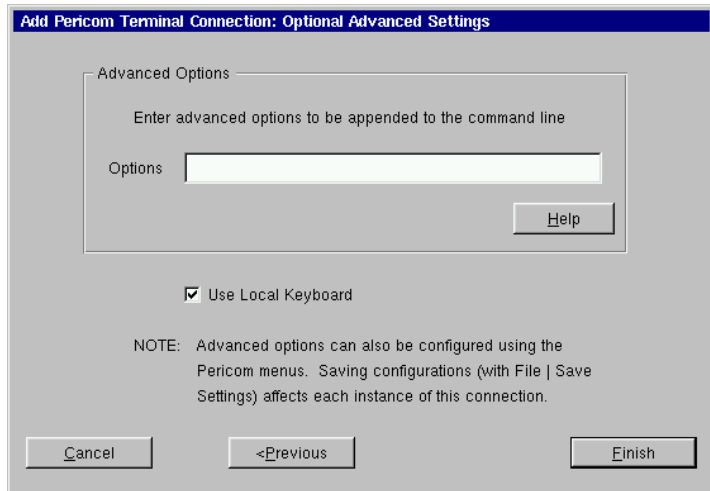
- 4 In the Modify User Interface dialog, choose the settings you would like applied to the Pericom Terminal Connection User Interface. Check the box of the corresponding option to set the feature. These options include:**
- **Menu Bar Items** - These options allow you to customize the menu bar displayed at the top of the Pericom Terminal window. You can hide the entire Menu Bar, or you can disable one or more of the individual menus (File, Settings, Help, and Quit) on the Menu Bar.
  - **Actions On Host Close** - These options allow you to customize what occurs when a terminal emulation session is closed. You can Exit Pericom, Stay Alive (keep Pericom running without a session), Reconnect, or have a dialog display allow you to choose which option you would like to occur.

- **Toolbars** - These option allow you to hide the toolbars in the Pericom Terminal window. You can disable the Status Bar, Scroll Bar, and the Soft Buttons.



**When finished customizing the user interface, if necessary, click Next or Finish.**

- 5 In the Optional Advanced Settings dialog, type any command line options you would like to append to the Pericom executable command. When finished, click Finish.**



**Note:** The Use Local Keyboard option (selected by default) causes your keyboard to be automatically configured using the Keyboard Locale setting in the General Settings dialog (see “Keyboard locale:” on page 24). Unchecking this option will require the user to configure their keyboard for the Pericom connection manually.

The Pericom Terminal connection will appear in the ezConnect connection list.

### Editing a Pericom Terminal connection

When editing a Pericom Terminal connection, the user is presented with a tabbed dialog, with each tab corresponding to the series of dialogs contained in the Add Terminal Connection wizard. For specific information concerning the detailed settings contained in these tabs, refer to the Creating a Pericom Terminal connection instructions above.

**Edit Pericom Terminal Connection**

Name | Startup | GUI | Advanced

Enter a name for this connection. The host is optional. If creating a serial connection the host should be omitted. Finally select an emulation type from the list.

Name: Pericom

Host:

Emulation: VT52

OK Cancel

### Printing text screens

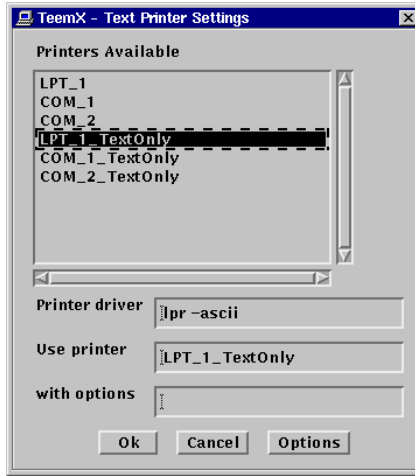
You can print teemX text screens to a printer directly attached to your appliance. (Your system administrator can configure your

appliance to print to a network printer.) The local printer must be turned on and not currently printing other files.

### Setting up a text printer

Before printing to a locally attached printer, configure teemX to use the port on which the printer is attached.

- Select Printer Setup from the teemX File menu.
- Select the appropriate printer port and type from the setup selection screen.

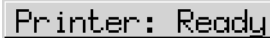


---

Printer Selection	Port	Description
LPT_1	Parallel	Text printer (Use the "Text-Only" version -- which adds carriage returns if necessary -- if the output does not line up with what appears on-screen)
LPT_1_TextOnly		
COM_1	COM1	
COM_1_TextOnly		
COM_2	COM2	
COM_2_TextOnly		

**Note:** The printer names that appear in the Printer Setup utility are listed in the NeoLinux /etc/printcap file. Administrators familiar with UNIX/Linux printcap files can modify this file to add network printers, or to modify the default entries.

- If the status bar is turned on (Settings | VT/ANSI/SCO dialog, Status Line = Indicator), Printer Ready appears when the settings have been made.

A screenshot of a terminal status bar. The text "Printer: Ready" is displayed in a monospaced font within a rectangular box that has a light gray background and a thin black border.



## CHAPTER 11 *Using the NeoLinux Desktop*

*This chapter explains how to use the NeoLinux desktop to manage your program windows.*

---

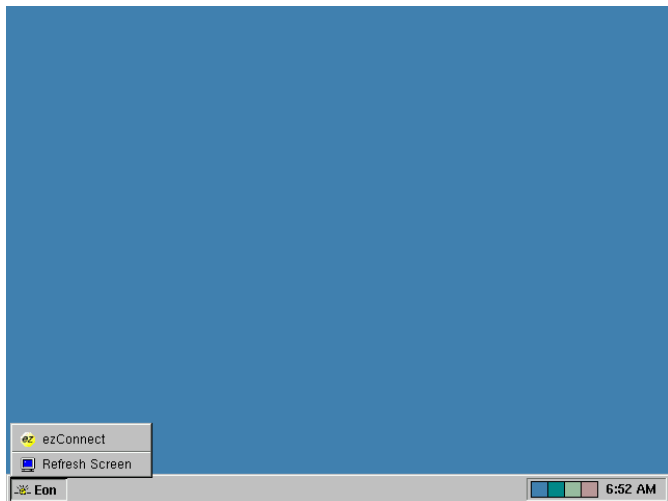
### Getting Started

---

#### Overview

Many other thin clients use full screen connections only, requiring the user to know keyboard short-cuts in order to switch between multiple connections. In addition to full screen connections, NeoLinux allows the user to create windowed connections, between which they can easily switch at the click of a mouse.

After you start a windowed connection, that connection will appear upon the NeoLinux desktop. The NeoLinux desktop is a graphical

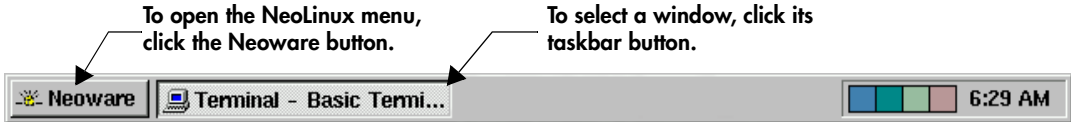


user interface that lets you manage multiple windows.

## Using the Taskbar

The NeoLinux taskbar is a movable control bar. Every open Windows connection and NeoLinux window has a taskbar button.

- **To open the Neoware menu**, click the Neoware button on the taskbar. Then click a menu item to select it.



To open the NeoLinux menu, click the Neoware button.

To select a window, click its taskbar button.

### Note

Your system administrator can hide the NeoLinux taskbar so that it appears as a thin line. When you point to this line, the taskbar appears. When you point away from taskbar, the taskbar hides again.

- **To select a window or connection**, even when it isn't on the current NeoLinux desktop, left-click its taskbar button. To learn how to use NeoLinux windows, see page 73.
- **To move the taskbar**, middle-click and drag the edge of the taskbar beyond the middle of the desktop. Then release the mouse button, and the taskbar moves to the top or bottom.
- **To resize the taskbar**, left-click and drag an edge of the taskbar. As you open more windows, you may want to enlarge the taskbar to make its buttons more readable.
- **To display the window properties**, right-click its taskbar button. To close a Properties box, click it.

## Using the Desktop Divider



The Desktop Divider, that resides on the right hand side of the taskbar, is a miniature representation of four desktops in which you can open and move NeoLinux windows. In effect, the Desktop Divider quadruples the work space available on the NeoLinux desktop.

- **To display a NeoLinux desktop**, left-click one of the colored squares in the Desktop Divider in order to access the desktop it represents.



- **To move windows between NeoLinux desktops**, Left-click on the computer icon in the upper left-hand corner of the window you would like to move. Highlight the Move to desk option in the drop-down menu, and then from the drill down menu select a Desk to place the window.

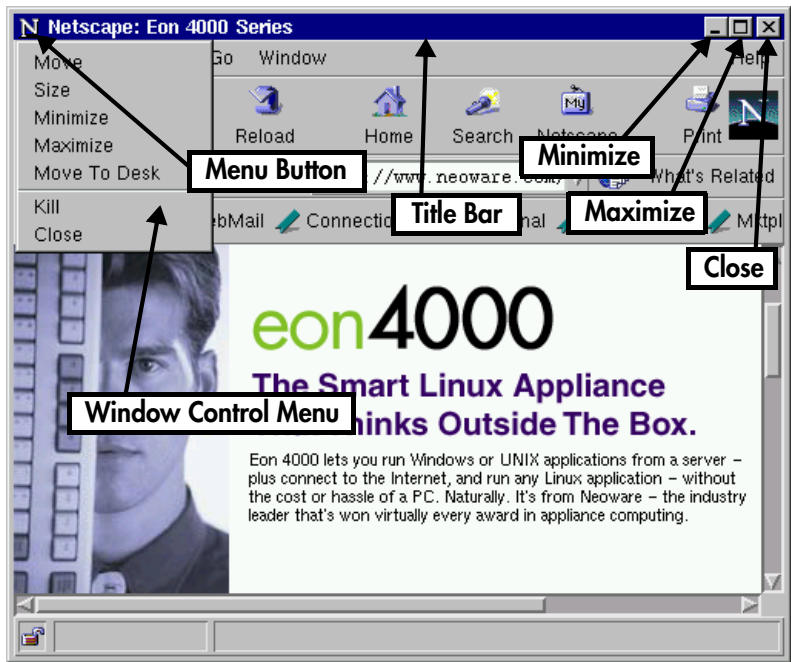
## Using NeoLinux Windows

### Using the window controls

#### FYI

The title bar displays the name of the program in the window. When it's highlighted, the window is active, meaning the keyboard and mouse interact with that program.

Each program on the NeoLinux desktop operates in a separate window that you can maximize, minimize, and move.



- **To display the Window Control menu**, click the Menu button. Then click a menu command. For example, click Move, drag the window, and then click the pointer at the desired position.

- **To reduce a window to a taskbar button**, click its Minimize button (-), or select minimize from the drop-down menu. To reopen the window, click its taskbar button.
- **To fill the desktop with a window**, click its Maximize button (□), or select maximize from the drop-down menu.
- **To close a window and its program(s)**, left-click its Close button (X), or select close from the drop-down menu.
- **To move a window**, left-click and drag its title bar. Or click and drag a window edge or corner with the middle or right mouse buttons.
- **To resize a window**, left-click and drag an edge or corner.

# Appendix A: Advanced NeoLinux Configuration

*This appendix discusses advanced configuration procedures for Neolinux based appliances.*

---

## Enabling the USB Controller in the appliance BIOS

---

If you are using Neoware computing appliance that were shipped prior to July 1, 2001, then you will need to enable the USB controller in the BIOS of your appliance in order to install and use USB devices. In devices shipped after July 1, 2001, the USB controller will already be enabled. Please carefully follow the instructions below in order to enable the USB controller in the appliance BIOS. **Note:** Avoid changing other settings in the appliance BIOS as it can cause the appliance to not function properly.

### Setting the USB Controller setting in the BIOS to Enabled

- 1 From the ezConnect - Neoware Connection Manager select Connection | Session | Restart in order to Restart your appliance.
- 2 When the Neoware Logo appears on the screen, press the Delete key in order to enter the BIOS configuration.
- 3 When the CMOS Setup Utility appears, select the Chipset Features Setup with the directional arrow keys and hit the Enter key.
- 4 When the Chipset Features Setup appears, select the USB controller setting with the directional arrow keys so that the setting "Disabled" is highlighted in red.  
**Note:** If the USB Controller setting highlight in red is

---

"Enabled" then skip to step 6.

- 5 Hit the Page Down or Page Up key once to set the USB Controller to "Enabled."
- 6 Hit the escape key (ESC) to exit the Chipset Features Setup and return to the CMOS Setup Utility.
- 7 Hit the F10 key to Save the BIOS configuration and exit the setup utility.

Your appliance will reboot and you can now install (see “Connecting USB peripheral devices” on page 8) and use USB peripheral devices.

## Setting your appliance to ignore BOOTP or DHCP responses

---

NeoLinux 2.1 has the capability of allowing the user to set their Ethernet controller to ignore BOOTP or DHCP responses from the server. In order for this to be accomplished, it is necessary to edit the pump.conf configuration file in the /writable/sys directory of your NeoLinux file system.

### Editing the pump.conf configuration file to ignore BOOTP or DHCP responses

- 1 Open an appliance console by selecting Settings | Appliance Properties | Console from the ezConnect menu bar.
- 2 At the bash\$ prompt type su and hit enter to login as the superuser. When prompted type the appliance password and hit enter. **Note:** If you have not set an appliance password, you will need to do so for this operation. For instruction on setting the appliance password see “Security” on page 19.
- 3 At the bash# prompt type e3pi /writable/sys/pump.conf and hit enter in order to open the pump.conf file in the e3pi text editor.
- 4 When the e3pi text editor appears, place the cursor at the end of the pump.conf file and add the following device entry:

```
device eth0 {
    ignore-dhcp
}
```

---

**Note:** The device entry example above is used to set the appliance to ignore DHCP responses. In order to ignore BOOTP responses replace the **ignore-dhcp** line with **ignore-bootp**.

- 5 Type CTRL-O to save the pump.conf file.
- 6 Type CTRL-X to exit the e3pi text editor.
- 7 Restart the appliance by selecting Connection | Session | Restart from the ezConnect menu bar.



# Index

---

## Numerics

10BaseT Ethernet 7

## A

active windows, defined 73

ADDS A2 63

alphanumeric emulations 63

ANSI BBS 63

appliance

connecting cables and monitor 6

power cord 6

Appliance Properties

Date and Time 24

Appliance properties

Console 26

desktop settings 25

Factory Reset 27

Messages 26

network settings 12

Printers 21

Servers 22

Sound 22

AT&T 5510 63

audio

ICA connections 33

## B

back panel connections 6

bar code scanners 6, 7

Basic Terminal 43

connections

adding 43

creating 43

editing 46

BIOS

Enabling the USB Controller 75

BOOTP

ignoring 76

BOOTP (Bootstrap Protocol)

configuring for 12

understanding 11

Broadcast Address 12

## C

Citrix Device Services (CDS) 3, 29

Client Name 13

COM ports 6

Computing Appliance 1

configuring appliances for Ethernet networks 11

connecting

back panel ports 6

modems 7

monitors 7

network cables 7

peripherals 6

printers 6, 7

connections

adding 16

---

## Index

- basic terminal 43
- Custom 59
- ICA 29
- Netscape 47
- Pericom terminal 64
- RDP 37
- X Window 53
- Basic Terminal 43
- copying 17
- creating 16
  - basic terminal 43
  - Custom 59
  - ICA 29
  - Netscape 47
  - Pericom terminal 64
  - RDP 37
  - X Window 53
- Custom 59
- deleting 16
- editing 16
  - basic terminal 46
  - Custom 61
  - ICA 34
  - Netscape 51
  - Pericom terminal 67
  - RDP 41
  - X Window 57
- ending 17
- establishing 17
- ICA 29
- managing 15
- Netscape 47
- Pericom Terminal emulation 63
- RDP 37
- running 17
- session management 17, 18
- using 17
- X Window 53
- Console 26
- Console window
  - function of 26
  - opening
    - from ezConnect 26
- Custom connections
  - adding 59
  - creating 59
  - editing 61
- D**
- data compression 33
- Data General DG410 63
- date, setting 24
- DEC 63
- DEC VT52, VT100, VT101, VT102, VT125, VT131, VT132, VT220, VT240, VT320, VT340, VT400-7\*, VT400-8\*, VT420 63
- Default Domain 13
- Default Gateway 13
- Desktop Divider
  - using 72
- Desktop Settings 25
- DHCP
  - ignoring 76
- DHCP (Dynamic Host Configuration Protocol)
  - defined 11
- DHCP/Bootp server 12
- DNS Server
  - Primary 13
  - Secondary 13
- DOC 18 63
- Domain Name Service (DNS)
  - defined 13
- E**
- Edit Default Values 13
- Enable interface 12
- Ethernet connector 7
- ezConnect 2, 15
  - appliance properties 19
  - connection properties 27
  - copying connections 17
  - creating connections 16
  - deleting connections 16
  - displaying connection manager 16
  - editing connections 16



- ending connections 17
  - managing connections 15
  - running connections 17
  - session management 18
  - using connections 17
- F**
- Factory Reset 27
- G**
- Global ICA Settings 27
    - Advanced tab 28
    - Drive Mapping tab 28
    - Firewall tab 28
    - Hotkeys tab 28
    - Preferences tab
      - keyboard layout/type 27
      - ports and devices 27
    - Server tab 28
    - Window tab 28
  - graphics emulations 63
- H**
- Hazeltine 1500 63
  - Hewlett Packard 2392A, 2622A, 700/92 63
- I**
- IBM 3151 63
  - IBM 3270 Models 2, 3, 4, 5 NVT Mode 63
  - IBM 5250 63
  - ICA (Independent Computing Architecture) 29
    - audio settings 33
    - connections
      - adding 29
      - creating 29
      - editing 34
    - data compression 33
    - Global ICA Settings 27
    - overview 3
  - ICL 7561 63
  - IP Address 12
    - appliance setting
      - assigned by DHCP or BOOTP 11
- K**
- keyboard
    - connecting 6
    - KB port
      - location 6
      - setting 27
  - Keyboard layout 27
- L**
- LAN 6
- M**
- McDonnell Douglas Prism-8, Prism-9 63
  - Messages 26
  - MetaFrame 3, 29
  - Microcolor 2200 63
  - Minimize button (Neoware windows) 74
  - modems 6
    - connecting 7
  - monitor
    - connecting 7
  - Monitor port 6
  - mouse devices
    - connecting 6
    - PS/2 type 6
- N**
- NeoLinux
    - desktop divider 72
    - desktops
      - displaying 72
      - moving windows between 73
      - using 71
    - taskbar 72
      - hiding 72
      - moving 72
      - opening active windows 72
      - properties box 72
    - windows 73
      - closing 74
      - maximizing 74
      - minimizing 74
      - moving 74

---

## Index

- resizing 74
  - Neoware
    - technical support 4
    - Web site 3
  - Neoware Appliances 2
  - Neoware appliances
    - configuring 11
  - Netscape 47
    - connections
      - adding 47
      - creating 47
      - editing 51
    - kiosk mode 48
    - preferences editor 50
    - printing from 51
  - Network Mask 12
  - Network Settings 12
    - broadcast address 12
    - Client Name 13
    - Default Domain 13
    - Default Gateway 13
    - DHCP/Bootp server 12
    - Edit Default Values 13
    - Enable Interface 12
    - IP address 12
    - network mask 12
    - Primary DNS Server 13
    - Secondary DNS Server 13
    - Speed 13
  - P**
  - Pericom Terminal connections
    - adding 64
    - creating 64
    - editing 67
    - printing text screens 67
  - Pericom Terminal emulation 63
  - peripheral devices
    - parallel and serial 7
    - usb 8
  - personal digital assistants (PDAs) 6
  - power jack 6
  - Prime PT250 63
  - printcap file 68
  - printers
    - settings 21
  - printing
    - connecting printers 7
    - Netscape pages 51
    - parallel port 6
    - Pericom Terminal connections
      - text screens 67
    - serial port 6
  - Properties box
    - from NeoLinux taskbar 72
  - protocols
    - ICA 3, 29
    - RDP 3, 37
  - PS/2 mouse 6
  - PWR connector 6
  - R**
  - RDP (Remote Desktop Protocol) 37
    - Connection Options 40
      - Client Name 41
      - Disable Encryption (French NT4-TSE servers only) 41
      - Disable sending mouse movements to server 41
      - Keyboard Layout 41
      - Use off-screen backup window 41
    - connections
      - adding 37
      - creating 37
      - editing 41
      - overview 3
  - Retrographics VT640 63
  - RJ-45 Ethernet jack 6
  - S**
  - SCO Console emulation 63
  - Security Settings 19
    - set/change password 20
  - Serial port
    - location 6
    - serial ports 6
-

---

Serial Window accessory 26

Servers

settings 22

Set/change password 20

setting the date and time 24

Siemens 97801 63

Sound

settings 22

Speed 13

Stratus V102 63

## T

Tandem 6526, 6530 63

technical support 4

teemX

alphanumeric emulations 63

graphics emulations 63

upgrade option 3

Tektronix 4010, 4014 63

Televideo 910, 925 63

Telnet 43

terminal emulation

teemX suite 3

title bar (NeoLinux windows) 73

## U

USB Controller

Enabling 75

USB ports, locating 6

## V

Viewdata 40, 80, Split 63

Virtual Terminal

switching via hotkeys 20

## W

Westward 2119 63

windows 73

active 73

buttons 73

closing 74

maximizing 74

minimizing 74

moving 74

resizing 74

title bar 73

using the controls 73

WinFrame 3, 29

Work Area 10

WYSE 50, 50+, 60 63

## X

X Window 53

connections

adding 53

creating 53

editing 57

