

IBM Network Station™ Family of Thin Clients
Access for today, flexibility for tomorrow



Network Station Manager V2R1 5250 and 3270 Client Overview

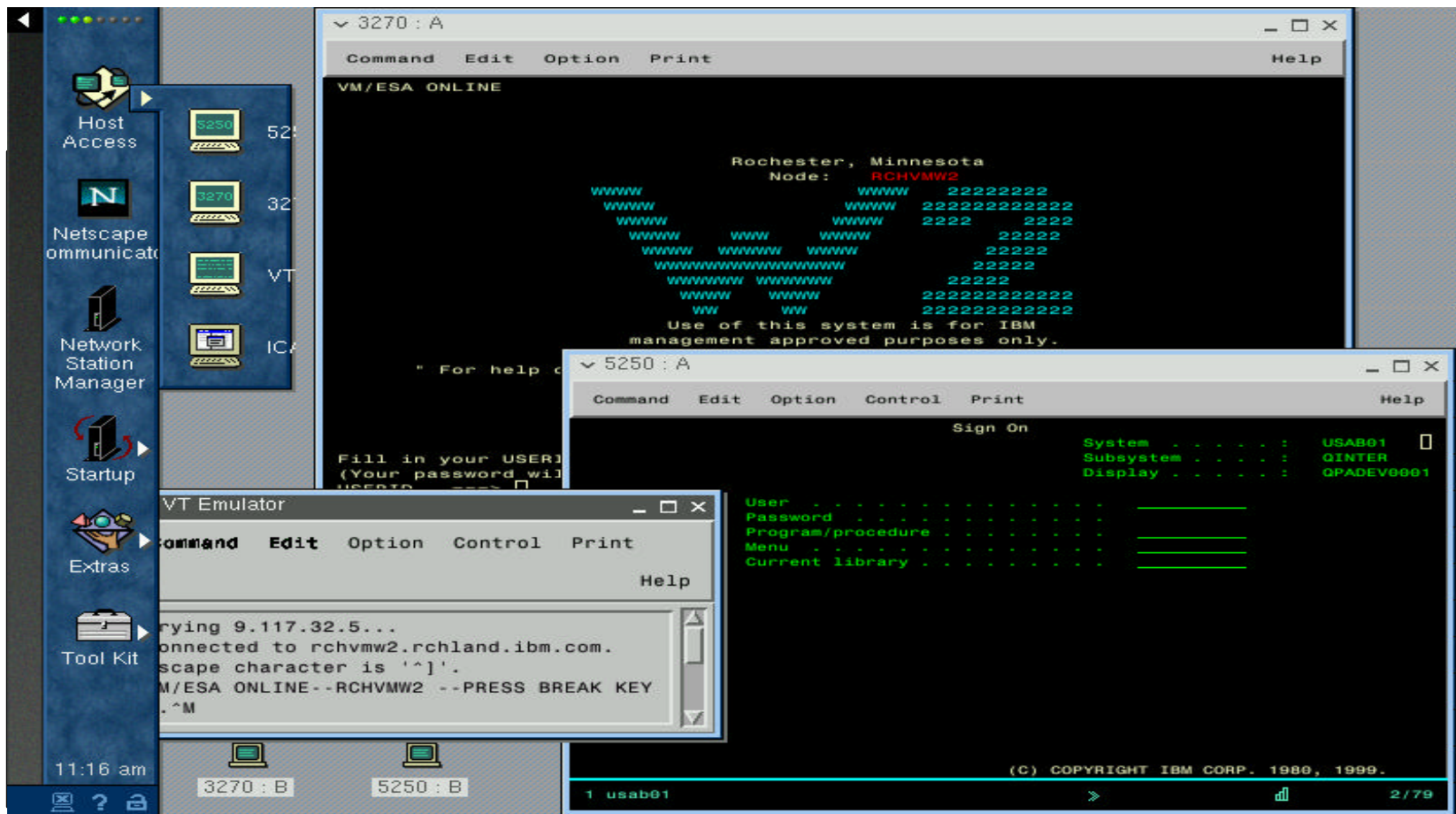
August 29, 1999



V2R1 Terminal Emulation Enhancements

5250, 3270

- Scalable fonts, password / ID encryption, editable macros
- and more....





What's New

- **Everything you liked about V1R3 functions migrate to V2R1**
- **V2R1 provides additional functions you asked for**
 - ▶ **Full screen coverage**
 - ▶ **Readability - scalable fonts**
 - ▶ **PC look and feel**
- **All V1R3 PTF functions were integrated**
 - ▶ **with improved command/control options**



V2R1 5250 and 3270 NPT Client Preview

What's New

- **Look and feel improvements - common to 3270 and 5250**
 - ▶ **Scalable Fonts**
 - Improved full screen coverage
 - Antialiasing support with 16 bit color models
 - 8 bit only on 300 series
 - ▶ **New Desktop manager**
 - Reserved keys manageable
 - ◆ (i.e. PF10, PF4)
 - Windows-like desktop operation and appearance
- **Session jump keys, including session short names**
- **Initialize Num Lock keyboard state - on or off**



V2R1 5250 and 3270 NPT Client Preview

What's New (continued)

- **Common operational and functional enhancements**
 - ▶ **Integration of R3 PTFs with full Help & MRI**
 - Command line functions integrated
 - some placed into NSM for standard management
 - ▶ **Augmented Help text, including keyboard functions**
 - Over 60+ pages of on-line help
 - ▶ **SSL version 3 telnet support**
 - Secure host session access via the internet
 - Password and User ID encryption
 - ▶ **Editable macros**
 - Ability to edit and restore playback files
 - ▶ **Use TCP/IP Host name as session name**
 - Security and managability improvements
 - Multi session capacity
 - ▶ **Limit number of sessions per user, without naming them**



Extensive Help

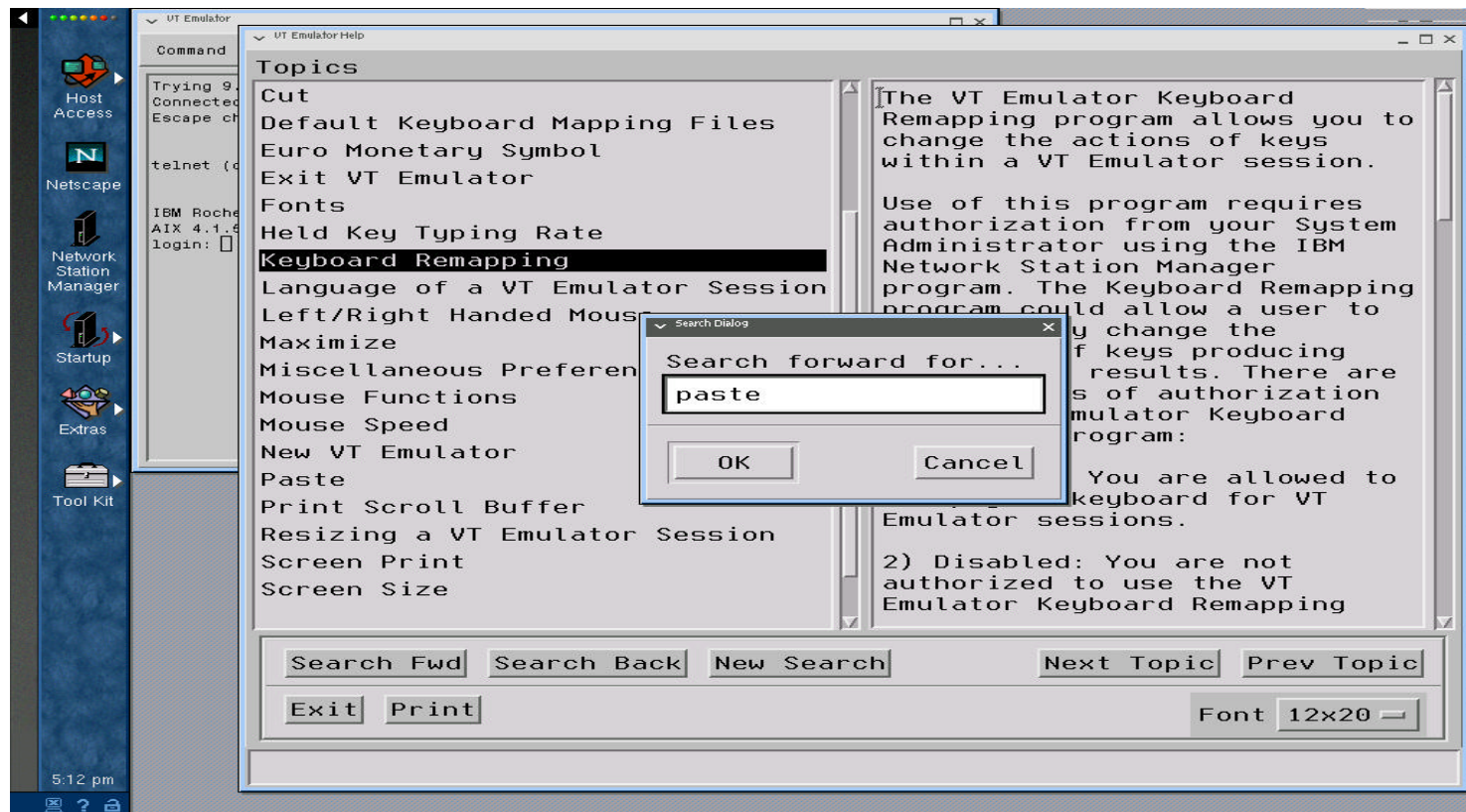
Rich functional help viewer

60+ pages of help text, also in remapper, color mapper

Keyword Search capability included

Print help text for later reference

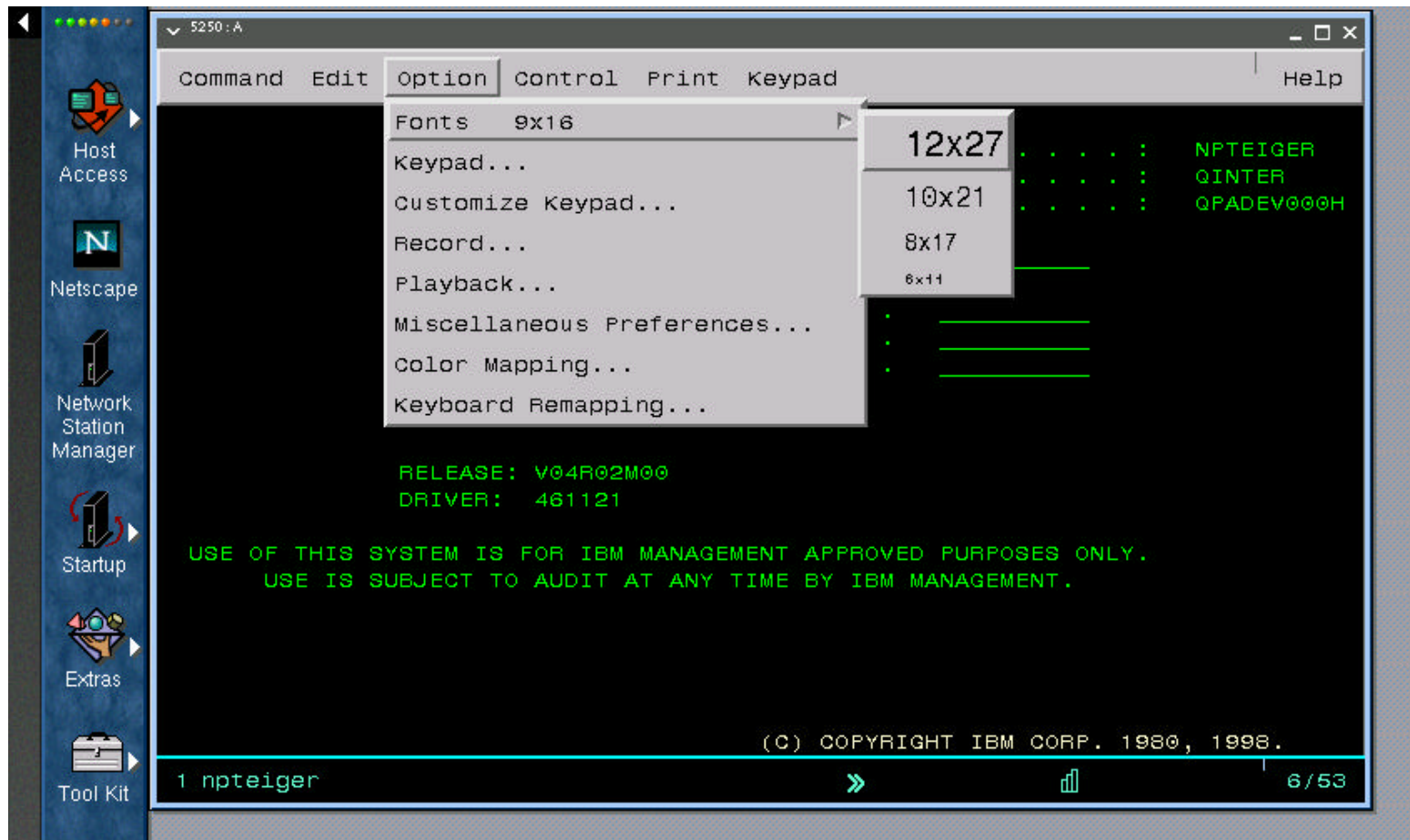
Font size selection for help text readability





Scalable fonts & manual size selection

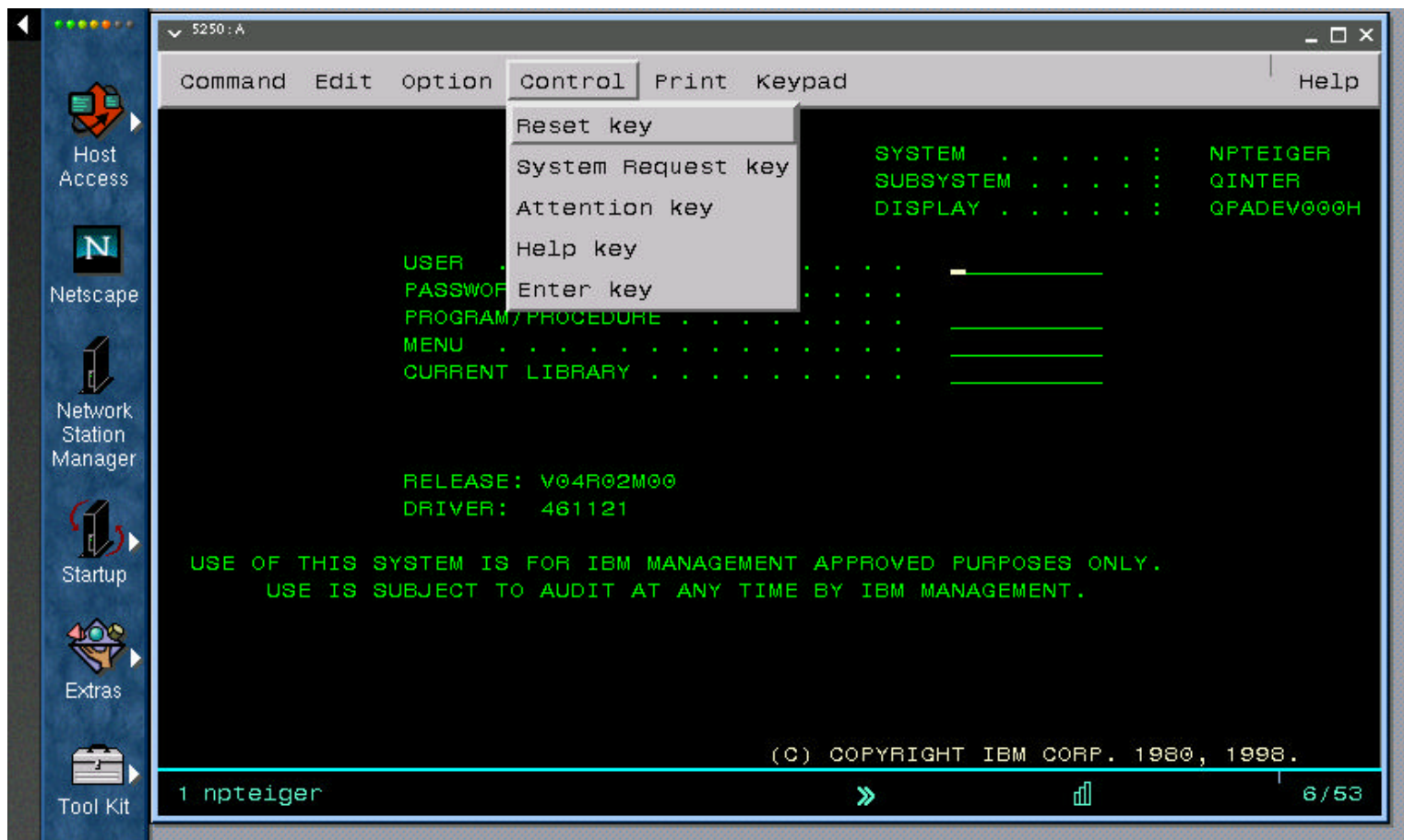
- Fonts size adjust automatically, as windows are resized, or
- Fonts can be manually selected from the pull down menu
- Example fonts available for 1024x768 resolution 24x80 session





Familiar Control keys menu, like V1R3

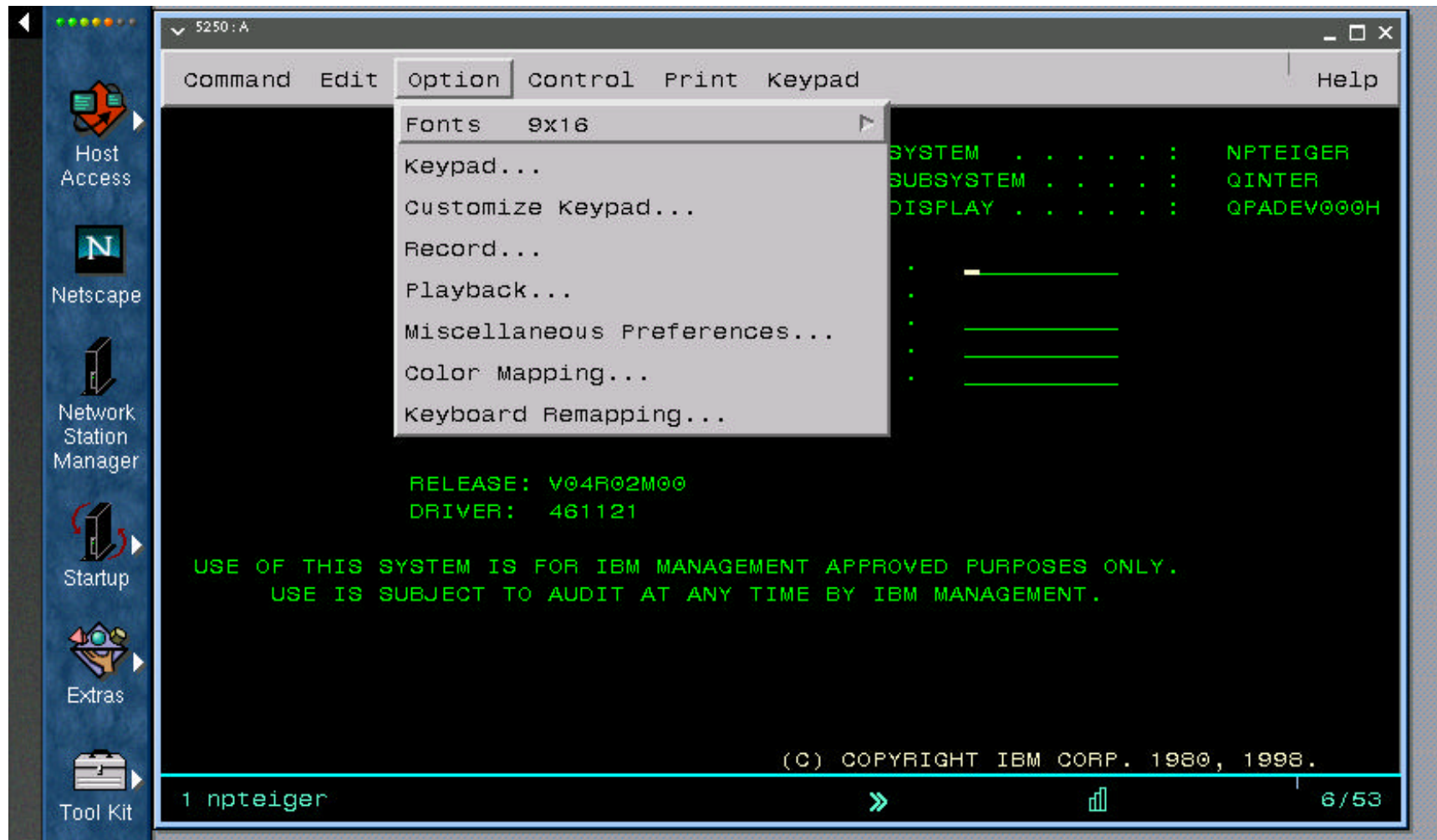
- Keys without PC keyboard nomenclature unique to 5250/3270
 - ▶ No need to refer to keyboard mapping "cheat sheet"





Familiar Menus for ease-of-use options

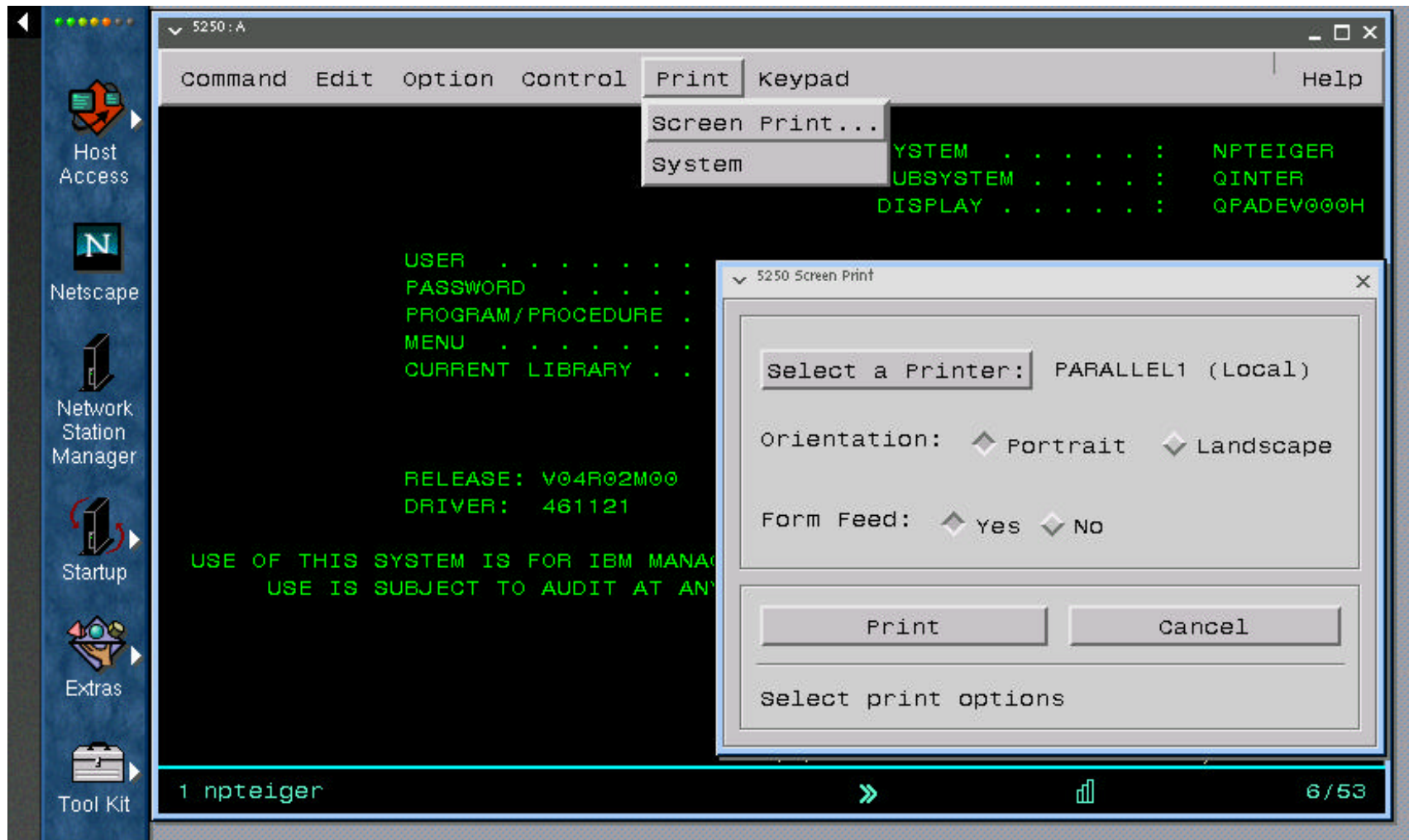
- Individual options have been enhanced
 - ▶ Same general access controls as V1R3 for each user
 - ▶ New Misc preferences for linear/block copy & audio on/off





Print menu details

- Single key print option also available
 - ▶ Supports Network, PCL, ASCII, or Postscript printers





V2R1 3270 NPT Client Unique Functions

- **3270 Client Unique functions for V2R1**
 - ▶ **Auto-disconnect option (after inactivity period)**
 - ▶ **PDT (Printer Description Table) support**
 - **For additional ASCII PC printer customization**



V2R1 3489 (5250) fax/image enhancements

- ▶ **3489 JPEG**
 - True color 16 bit support
 - "Extended baseline" JPEG format supported
 - TIF and PCX color image formats supported
 - Supported by Image Plus, & Real Vision viewers
 - Image-enabled mode now enabled, by default



V2R1 Sales Considerations (All Clients)

- **122 key keyboard support - gone**
- **Minimum Footprint increased**
 - ▶ **32 MB minimum**
 - **Original 16 MB machines not supported**
 - ▶ **up to 4X network traffic boot & application load**
- **NLS coverage reduced**
 - ▶ **Latin 1 locales subset only**
 - **English, UK English, French, Belgian Fr, Canadian Fr, Swiss Fr, German, Swiss German, Italian, Spanish, LA Spanish, Swiss Italian, Brazilian Portuguese, Dutch, Belgian Dutch, Danish, Finnish, Norwegian, Portuguese, Swedish**
- **Comm error recovery**
 - ▶ **No messages if Boot Server connection broken**
- **No Twinax Model 341 support**
- **No Icon color change, if host data received (5250 & 3270)**



Yet to come - PTF function additions

- **Customized fonts for common CRT resolutions**
 - ▶ tailored for full screen applications
 - ▶ optimized for 24x80, 27x132, 43x80 session sizes
 - ▶ improved readability, same size fonts



Web sites for support info from the Lab

- **Tips and Techniques (sorted by component & release)**
 - ▶ known limitations, and any work-arounds
 - ▶ "how to" information
- **Positioning and sizing information**
 - ▶ may be limited to internal only
- **Pointers to all on-line pubs, including Red Books**
- **Sample configuration files for custom cases (kiosks, etc)**
- **Anything else that may be useful to technical people who are setting up or selling Network Stations**
- **3 different web sites for different audiences, single source:**
 - ▶ **External site - <http://www.pc.ibm.com/support/>**
 - no need to log in; just select Network Station product
 - ▶ **Business Partner - <http://www.pc.ibm.com/partner/infotips/>**
 - ▶ **Internal only site - <http://w3.pc.ibm.com/helpcenter/infotips/>**
 - seems to always require a userid & pw at the moment
- **Help text can be found at <http://www.ibm.com/nc/pubs>**



V2R1 - Continued NPT Client Improvements

- **More windows-like PC affinity**
- **Better full screen coverage with scalable, antialiased fonts**
- **SSL for improved security**
- **Consistent family image, including VTxxx**
- **Improved management via NSM GUI**
- **Integrated all V1R3 PTFs**
- **Extensive on-line help, with keyboard function definitions**